

TYPE

SP20HEM SP30HEM SP50HEM



**Carefully read this manual before using
the electric shop press.**

Index

Page

1.	Symbols Label	3
2.	Safety Instructions	4
3.	Assembly	5
4.	Usage	10
5.	Maintenance	16
6.	Specifications	17
7.	Schematic Diagram	18
8.	Warranty	19
9.	EC Declaration	20

Storing the User Manual

- Keep the user manual near the electric shop press in an accessible location.
- Store the user manual in a place where it will not be exposed to moisture.
- Use the user manual in a proper manner, avoiding any damage to it.
- The use of the electric shop press by individuals who are not familiar with the instructions and procedures described in this manual is strictly prohibited.

This user manual is an integral part of the electric shop press and must therefore be stored carefully with the press. If the electric shop press is transferred to another owner, the user manual must be included.

© 2025 MAMMUTH

All rights reserved. No part of this publication may be reproduced, stored in an automated data system, or made public in any form or by any means without the express prior written consent of the publisher, except as permitted by law.

NLD 1. Symbolen label

ENG 1. Symbols label



NLD Lees voor gebruik de gebruikershandleiding.

ENG Read the user manual before use.



NLD Draag altijd een veiligheidsbril bij het bedienen van de werkplaatspers.

ENG Always wear safety goggles when operating the shop press.



NLD Het dragen van veiligheidsschoenen is verplicht bij het bedienen van de werkplaatspers.

ENG Wearing safety shoes is mandatory when operating the shop press.



NLD Het dragen van beschermende handschoenen is verplicht bij het bedienen van de werkplaatspers.

ENG Wearing protective gloves is mandatory when operating the shop press.



NLD Pas op; elektrische spanning

ENG Warning; Electrical voltage



NLD Pas op; Klemgevaar voor handen

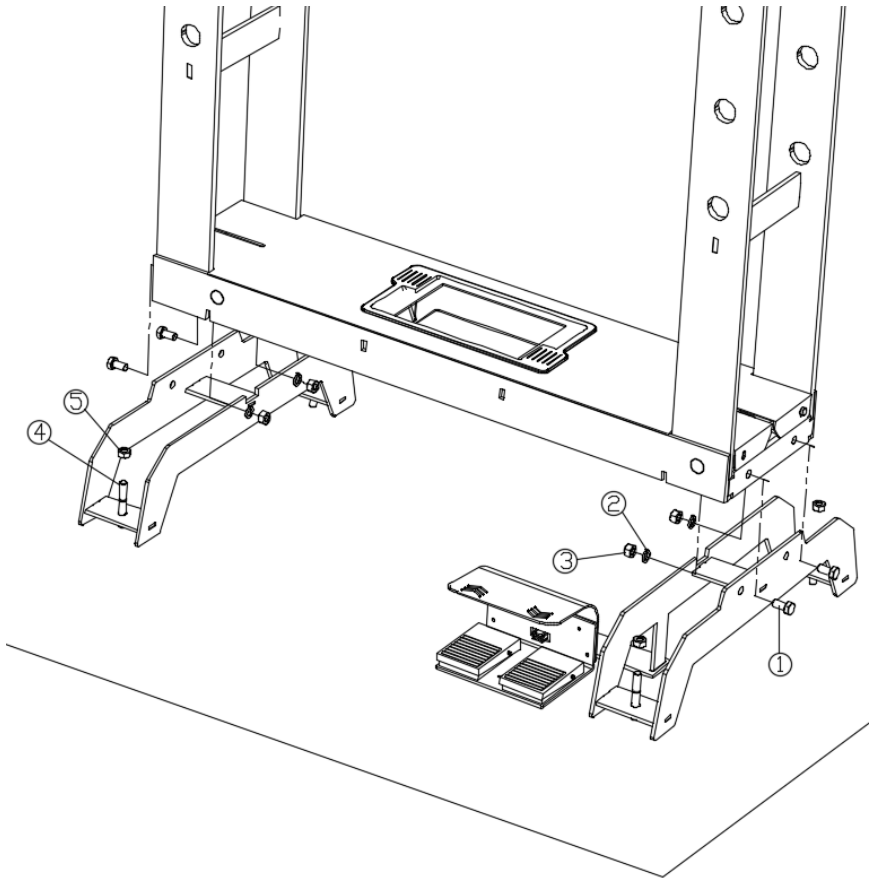
ENG Warning; Crushing of hands

2. Safety Instructions

1. This electric shop press is designed for general applications such as bending, pressing, removing shafts and bearings, etc.
2. Never use the electric shop press for applications it is not suited for.
3. Always use the appropriate tools for each specific task.
4. Operate the electric shop press correctly, ensuring that all parts and components are in good condition and that no parts are missing before use.
5. The electric shop press must only be operated by authorized individuals who have carefully read and understood this manual.
6. Keep children out of the workspace at all times.
7. Always position the electric shop press against a wall. If the electric shop press is placed in an open workshop, it is essential to install a protective cover at the back of the device. The base of the electric shop press must be securely anchored to the floor!
8. Ensure the operator wears protective clothing, gloves, a safety helmet, safety shoes, and hearing protection during operation.
9. To prevent accidents, always stay aware of ongoing work on the machine and remain focused on the task at hand.
10. Do not modify the electric shop press in any way. The pressure relief valve must not be adjusted under any circumstances.
11. Never exceed the rated capacity of the electric shop press and the V-blocks.
12. Failure to comply with these instructions may result in injury or damage to the user, the electric shop press, or the workpiece.
13. The manufacturer assumes no liability for improper use of the electric shop press or the processed components.

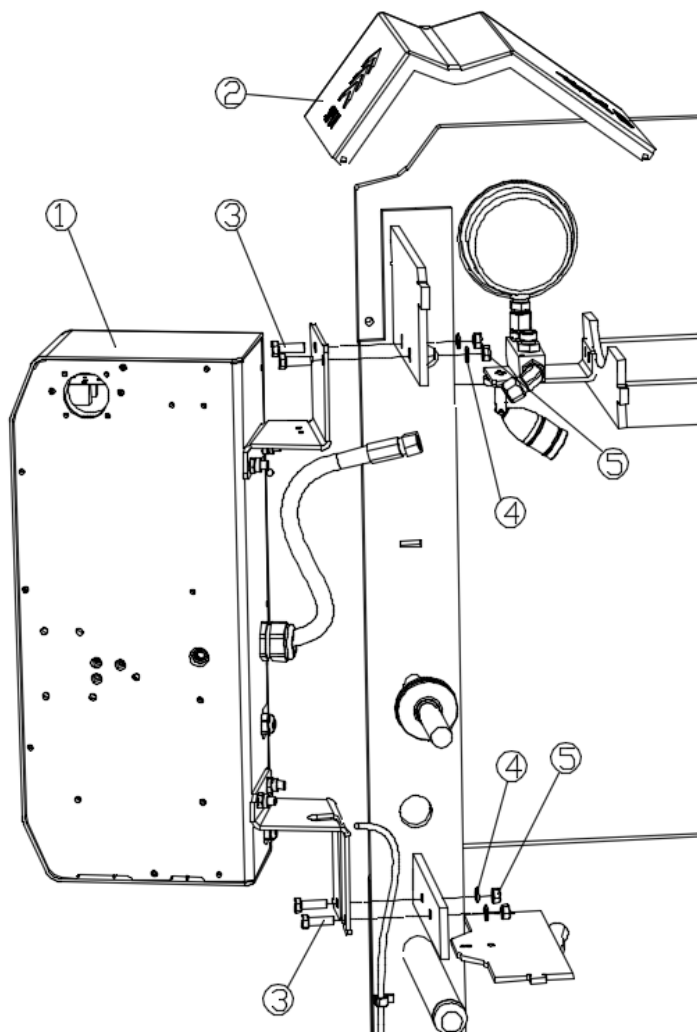
3. Assembly

Foot Base Assembly



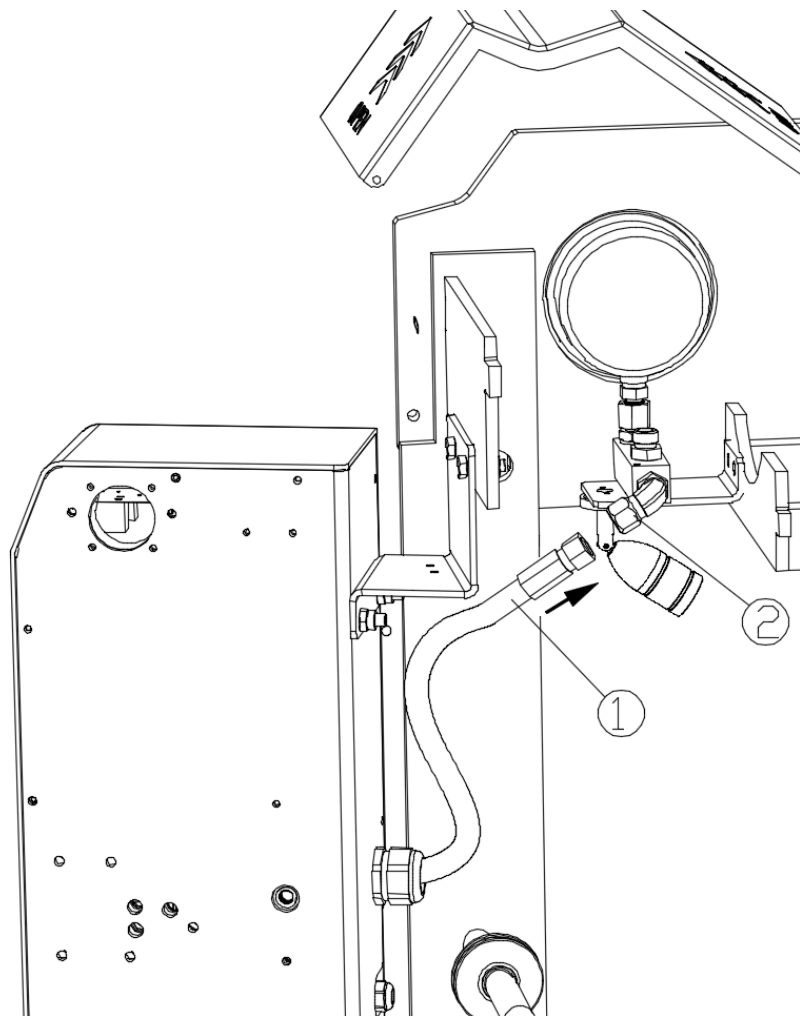
1. Bolt
2. Spring Washer
3. Nut
4. Anchor Bolts (Not Included)
5. Anchor Nuts (Not Included)

Electric Control Cabinet



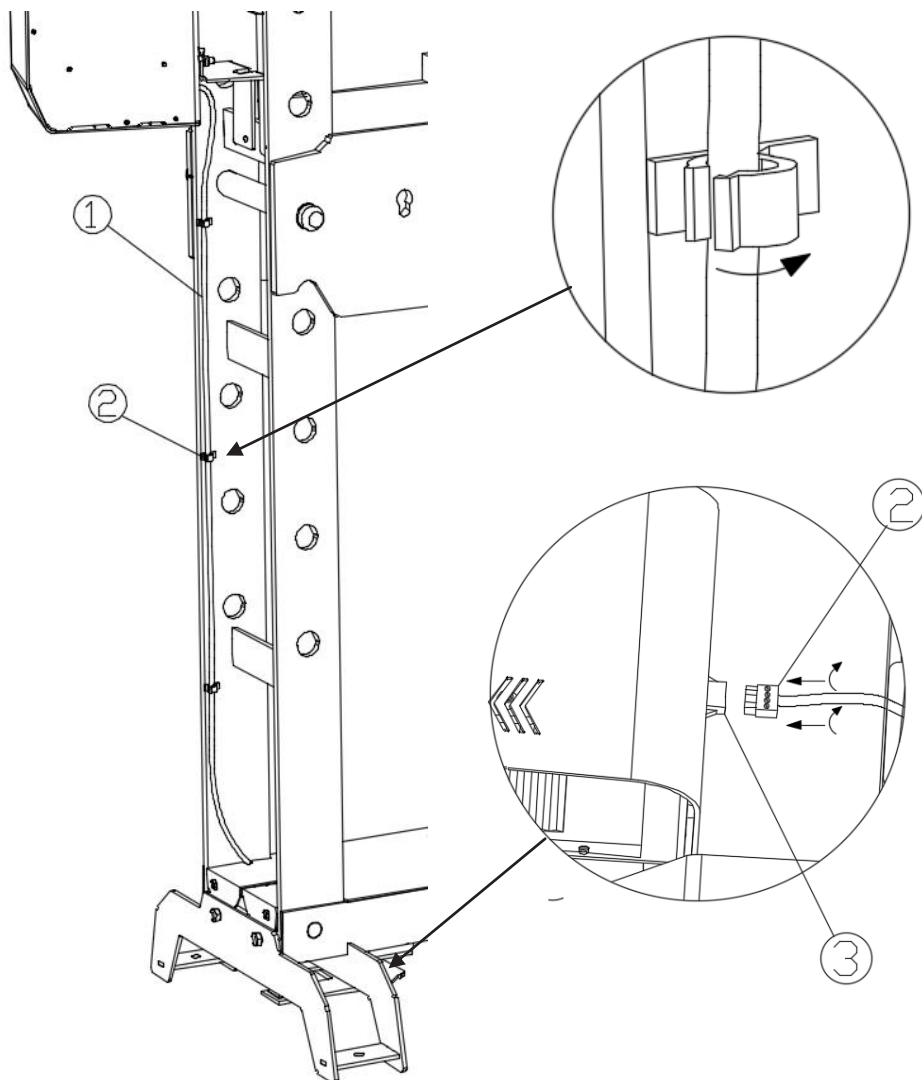
1. Electric Control Cabinet
2. Dust Cover
3. Bolt
4. Spring Washer
5. Nut

Oil Line Connection



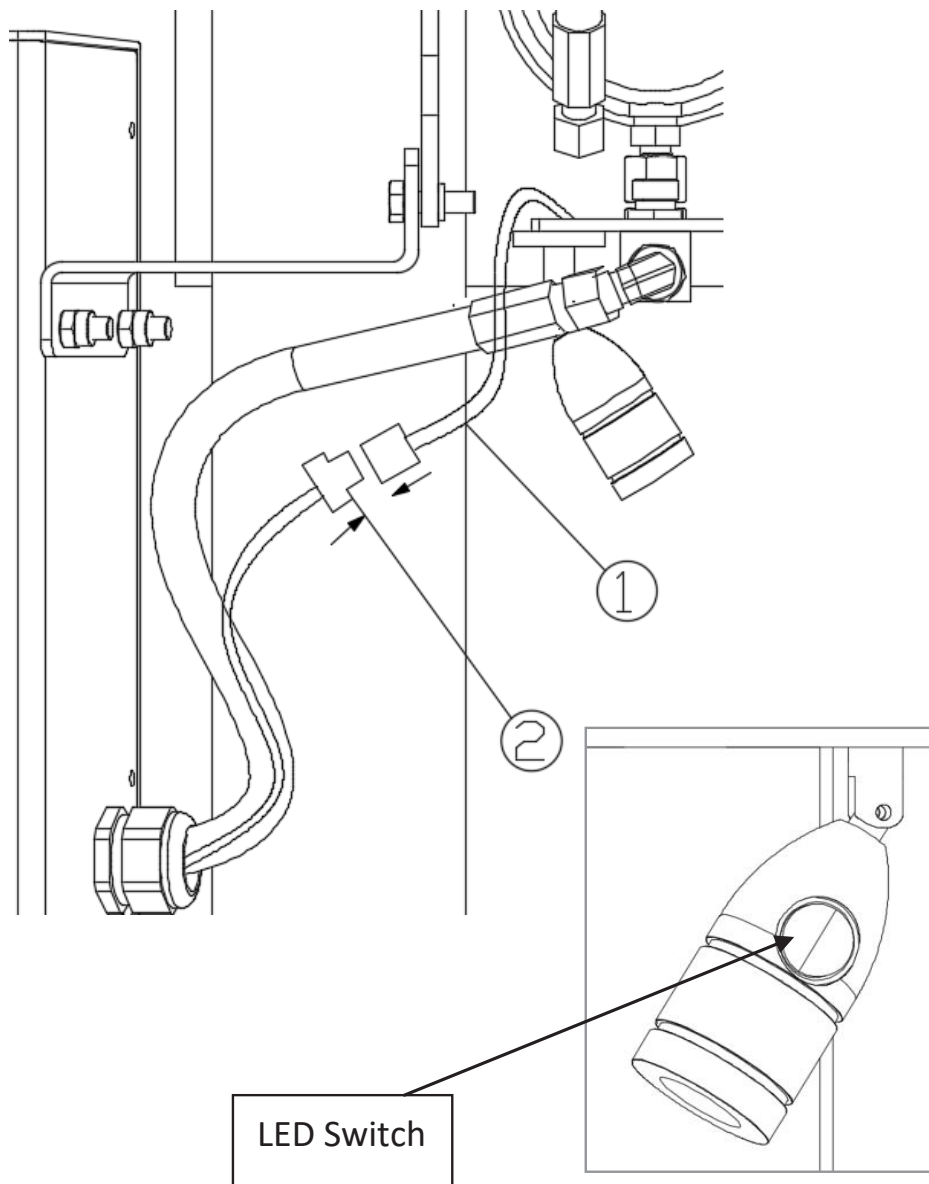
1. Oil Line
2. Oil Line Elbow Connector

Foot Pedal Control Cable



1. Foot Switch Cable with Counter Plug
2. Cable Fixing Clamp
3. Foot Switch Cable with Plug

LED Lamp Power Cable



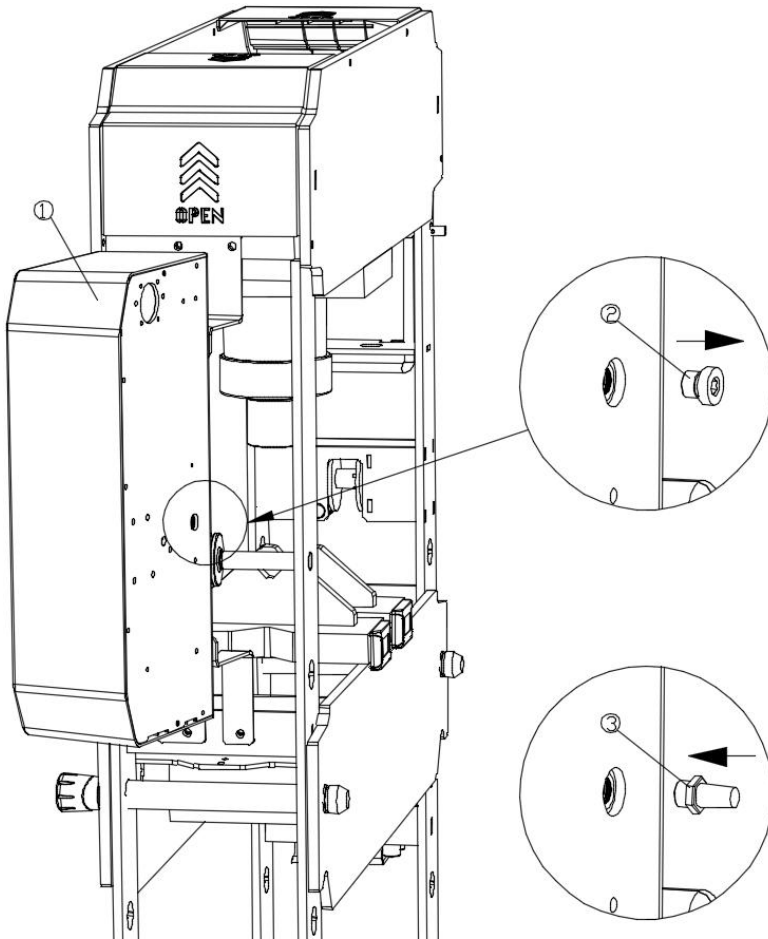
1. LED Light Power Cable with Plug
2. LED Light Power Cable with Counter Plug

4. Usage

1. To reduce the risk of injury, anyone who uses, installs, repairs, maintains, changes accessories, or works near this machine must carefully read and understand these instructions. Keep the manual in a safe place for future reference.
2. The voltage of the electric control cabinet is (AC) 230V.
3. Ensure that all components are correctly assembled and securely tightened. The press must be placed on a solid, flat, and horizontal surface.
4. Make sure the worktable is in the correct position and locked in place with the pins.
5. Allow sufficient space around the press during operation to ensure it is always accessible.
6. The press's capacity is based on the use of V-blocks in pairs. If only one block is used, it must be carefully positioned and must not exceed 50% of the total capacity.
7. Only an authorized person who has carefully read and understood the contents of this manual is permitted to operate the press.

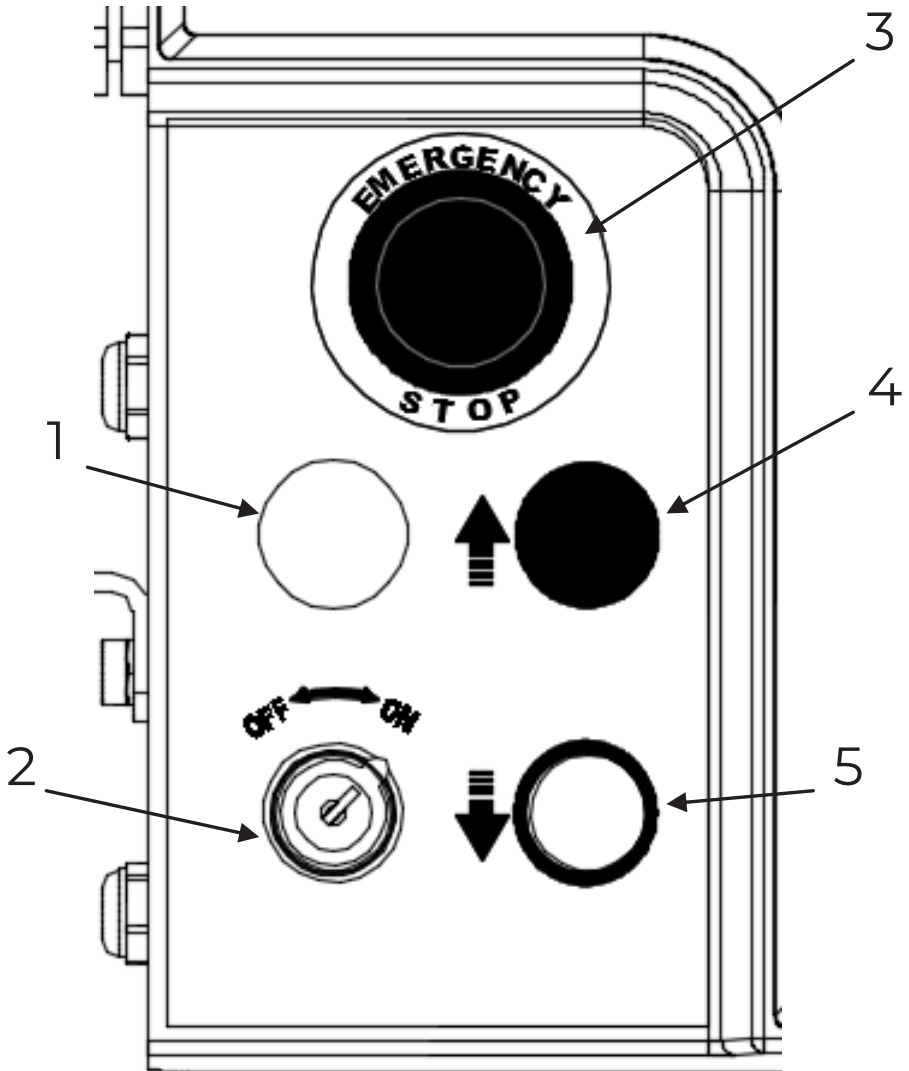
Installing the Vent Valve

Before operating the shop press, the transport stopper must be replaced with the vent valve.



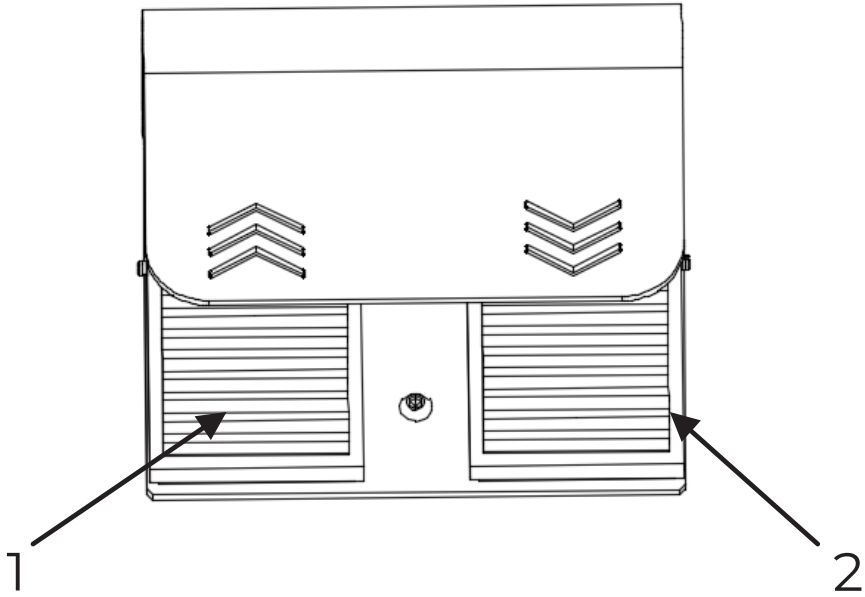
1. Electric Control Cabinet
2. Oil Plug
3. Vent Plug

Control Cabinet



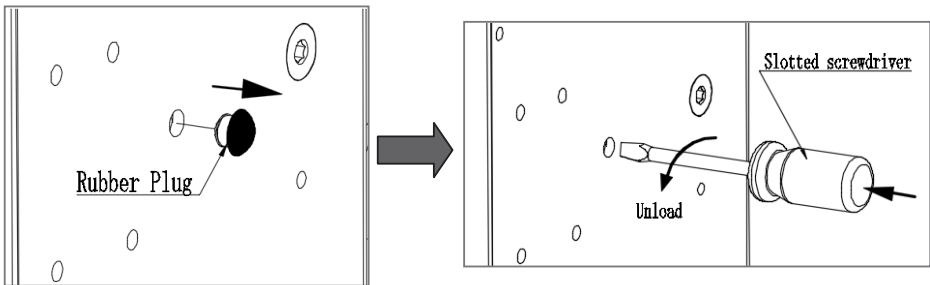
1. Power Indicator Light
2. Power Switch
3. Emergency Stop Button
4. Press Cylinder Up
5. Press Cylinder Down

Foot Switch



1. Press Cylinder Up
2. Press Cylinder Down

Manual Pressure Relief

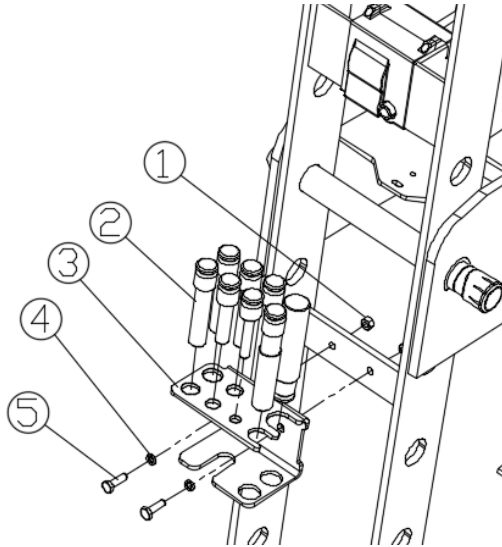


Follow the steps below to manually relieve pressure from the press:

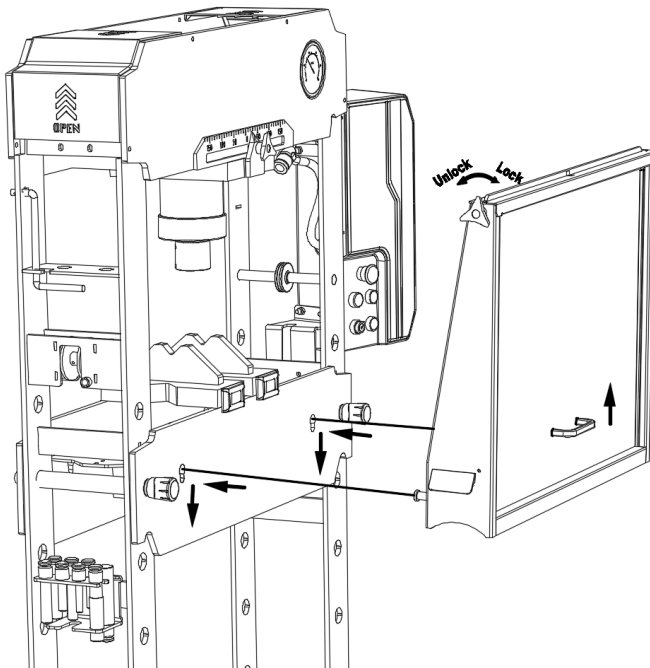
1. Remove the rubber plug as shown in the image on the left.
2. Turn the relief knob counterclockwise, opening it by a maximum of 3 turns.
3. Step 2: [Specify additional instructions if needed].

Press Pin Holder (Optional)

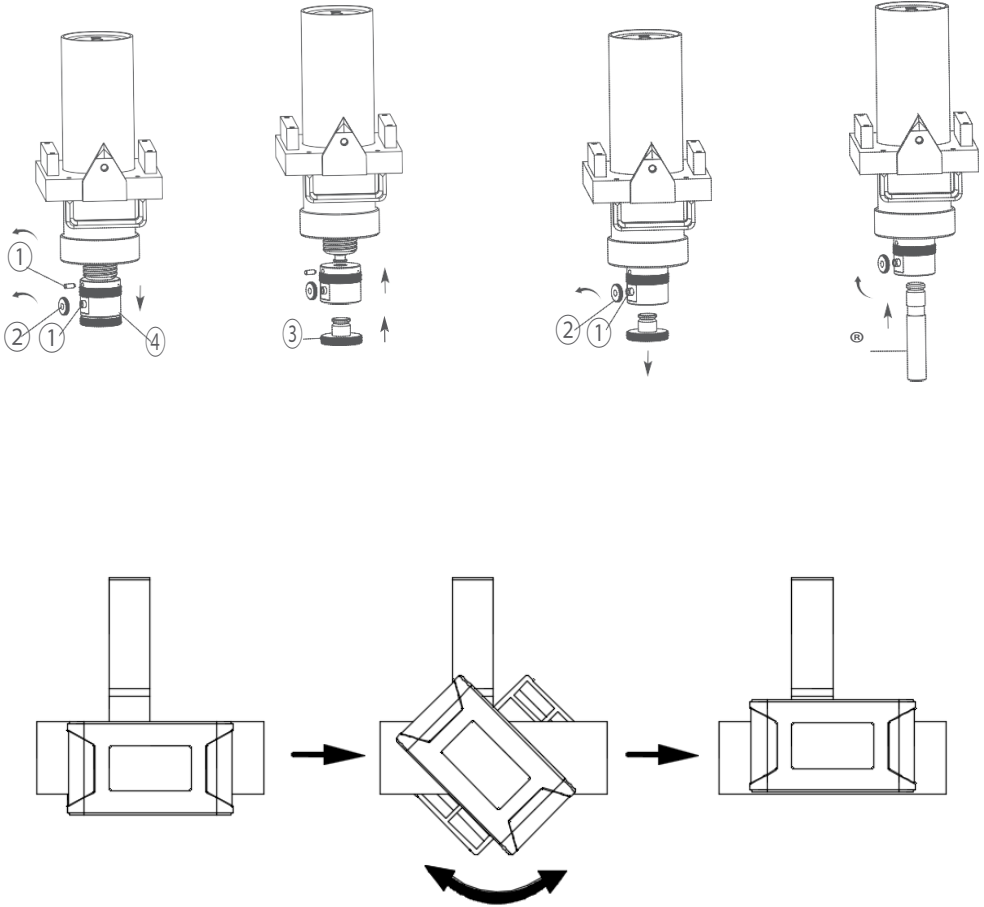
1. Screw
2. Press Pins
3. Holder
4. Spring Washer
5. Screw



Safety Screen (Optional)



Instructions for Using the Upper Cap and V-Block



When using the V-blocks, the pins of part 7.1 must always point downward.

5. Maintenance

- Do not use a damaged or deformed product. If abnormal noises or vibrations occur, stop using the press immediately and inspect it. Contact the manufacturer for assistance. It is recommended to have the inspection performed by a repair workshop authorized by the manufacturer.
- Keep the press clean and well-lubricated to prevent foreign substances from entering the system. If the press has been exposed to rain, snow, sand, or dirt, thoroughly clean it before use.
- Store the press with the pistons fully retracted in a well-protected environment, away from corrosive fumes, abrasive dust, or other harmful elements.
- Regularly inspect the condition of the press.
- Store the product in a dry and corrosion-free environment.
- The operator must be aware that repairing this equipment may require specialized knowledge and facilities. It is recommended to have the press inspected annually by a repair workshop authorized by the manufacturer or supplier.
- Replace defective parts, stickers, or safety labels with components specified by the manufacturer or supplier.
- Products that appear damaged, show signs of wear, or are malfunctioning **MUST BE TAKEN OUT OF SERVICE UNTIL THEY ARE REPAIRED.**
- Necessary repairs should be performed by a repair workshop authorized by the manufacturer or supplier, provided the repairs are approved by the manufacturer or supplier.
- Only use original spare parts and/or adapters supplied by the manufacturer.

Hydraulic Oil

This product uses Mammuth CH22 hydraulic oil or other hydraulic oils with the same specifications. The hydraulic oil volume for different models is as follows:

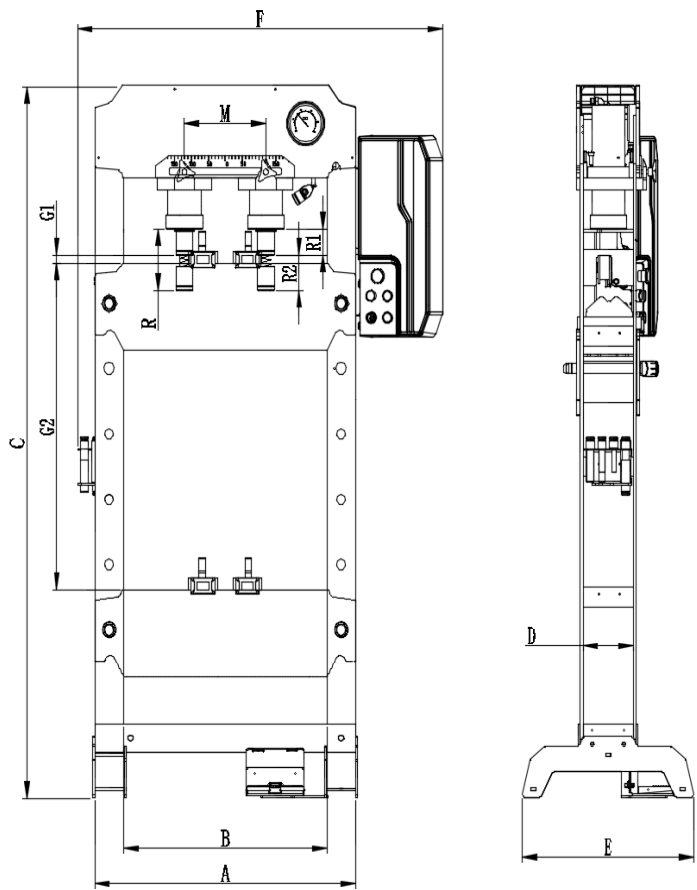
SP20HEM:	1.7 liters
SP30HEM:	2.0 liters
SP50HEM:	2.3 liters

- The shop presses are supplied from the factory with sufficient hydraulic oil.
- The components of the shop presses must be kept clean, and care must always be taken to prevent corrosion.
- Always use original Mammuth accessories.

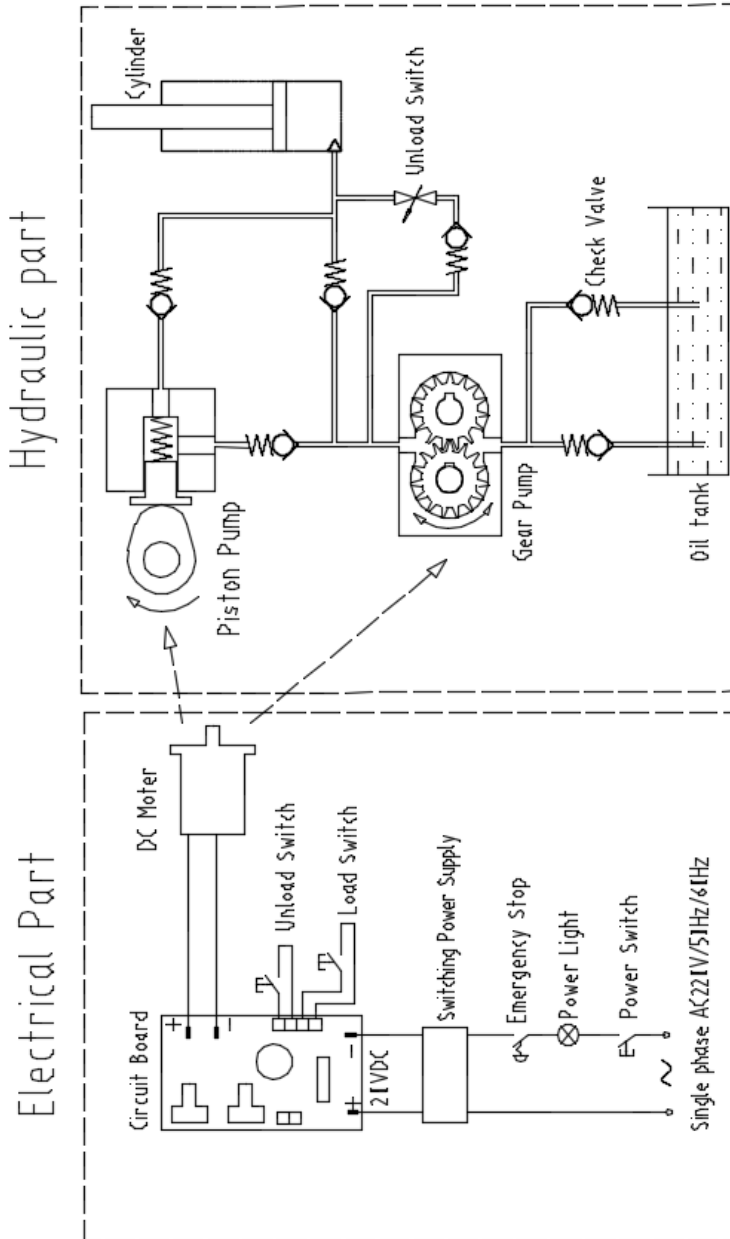
6. Specifications

Type	Capacity	Voltage	Power	Oil capacity
SP20HEM	20 000 KG	230V (AC)	500 W	1.7 L
SP30HEM	30 000 KG	230V (AC)	500 W	2.0 L
SP50HEM	50 000 KG	230V (AC)	500 W	2.3 L

Type	A	B	C	D	E	F	G1	G2	R	R1	R2	M
SP20HEM	770	600	1800	152	505	1080	25	850	220	145	75	200
SP30HEM	770	600	1800	148	505	1080	25	850	220	145	75	200
SP50HEM	930	750	1900	200	535	1240	80	780	220	145	75	280



7. Schematic Diagram



8. Warranty

1. The warranty takes effect on the date specified on the purchase invoice and is valid for 12 months.
2. The warranty is non-transferable without a written statement of consent from your supplier.
3. Warranty claims cannot be made without the purchase invoice.
4. The warranty applies only if the product is used in accordance with the supplied user manual and solely for its intended purpose.
5. No modifications to the product are allowed.
6. The warranty does not cover improper use.
7. Shipping costs are not covered under the warranty terms.
8. Repairs must be performed exclusively by your supplier. Any repairs carried out by third parties will void the warranty.
9. Repairs performed during the warranty period will not extend the warranty's validity. However, a three-month warranty on the repair itself will be provided if the standard warranty period expires.
10. Maintenance tasks specified in the user manual must be performed on time.
11. Warranty claims can only be made at the point of purchase where the item was bought.

EG-verklaring van overeenstemming - Declaration of conformity – EG- Konformitätserklärung - Declaration de conformite - Dichiarazion di conformita- Declaracion de conformidad

Wij, We, Wir, Nous, Noi, La empresa,
Valkenpower BV, Industrieweg 4, 6051 AE Maasbracht, Nederland,
verklaren geheel onder eigen verantwoordelijkheid dat het product
declare under our sole responsibility that the product
erklären in alleiniger Verantwortung, dass das Produkt
déclarons sous notre seule responsabilité que le produit
dichiariamo sotto la nostra responsabilità che il prodotto
declaramos bajo nuestra exclusiva responsabilidad que el producto

Type Model Type Tipo Tipo	Beschrijving Description Beschreibung Description Descrizione Descripción	Merk Brand Marke Marque Marca Marca
SP20HEM SP30HEM SP50HEM	Electric Shop Press	Mammuth

Waarop deze verklaring betrekking heeft, in overeenstemming zijn met de volgende normen:
To which this declaration relates is in conformity with the following document:
Auf welches sich diese Erklärung bezieht, den folgenden Normen entspricht:
Auquel se réfère cette déclaration est conforme à le document suivant:
A cui si riferisce dichiarazione, corrisponde ai seguenti documenti:
Al que se refiere la presente declaración, corresponde a los siguientes documentos:

De machinerichtlijn, The Machinery Directive, Die Maschinenrichtlinie, La Directive, La direttiva sulle machine, La Directiva sobre máquinas:
2006/42/EC

Nederland, Maasbracht, 21-01-2025

Serienummer
Serial number:

Directeur Valkenpower

B.A.H Valkenburg

