



HUGONG



TYPE

EXTREMIG160III



**Read this manual carefully before
using the product.**

Table of contents

Page

1	General	3
2.	Safety instructions	3
3.	Assembly	4
4.	Use	5
5.	Maintenance	6
6.	Specifications	6
7.	Parts list	7
8.	Circuit diagram	9
9.	Warranty	10
10.	EC declaration	13

Storing the user manual

- Keep the user manual in an accessible place, close to the product.
- Ensure that the manual is stored in a dry place.
- Use the manual carefully and avoid damage.
- The product must not be used by persons who are not familiar with the instructions and procedures in this manual.

This user manual is an integral part of the product and must therefore be kept in a safe place. If the product is transferred to another user, the manual must be included.

© 2025 HUGONG

All rights reserved. No part of this publication may be reproduced, stored in a retrieval system, or transmitted in any form or by any means, without the prior written permission of the publisher, except as permitted by law.

1. General

This manual is intended for the EXTREMIG 160WIII, 180WIII and 200WIII MIG welding machines from Hugong. Read these instructions carefully before use. These welding machines are DC inverter MIG welding machines, suitable for applications on 230V single-phase mains voltage (50/60Hz) and intended for light maintenance and DIY use. The machine is suitable for MIG welding of carbon steel and stainless steel.

1.1 Contents of delivery

- 1x DC inverter MIG welding machine
- 1x MIG welding torch
- 1x Ground cable with clamp
- 1x Gas hose Ø8 mm
- 1x User manual

1.2 Initial check

Check the device and accessories immediately after unpacking for damage or missing parts. Report any transport damage to the carrier immediately.

2. Safety instructions

2.1 Electric shock

- Always wear dry protective clothing, including welding overalls, gloves and insulated shoes.
- Never touch the welding wire and the workpiece or the ground at the same time.
- The device must be earthed during use.
- Never perform maintenance when the power is switched on.

2.2 Fumes and gases

- Only weld in well-ventilated areas or use a fume extraction system.
- Do not weld on coated materials such as galvanised steel, cadmium or barium without adequate extraction or respiratory protection.
- Avoid welding near solvents, sprays or cleaning agents.

2.3 UV and IR radiation

- Use a fully covering welding helmet with a suitable filter (in accordance with ANSI Z87.1).
- Wear flame-retardant clothing and protect all exposed skin.
- Use welding screens to protect bystanders.

2.4 Fire hazard

- Keep flammable materials at least 10 metres away or cover them with fire-resistant material.
- Do not wear clothing with open pockets or lapels.
- Keep a fire extinguisher within reach.

2.5 Hot materials

- Do not touch welded materials with your bare hands.
- Allow the welding torch to cool before touching it.

2.6 Electromagnetic fields

- Persons with pacemakers should not carry out welding work or

come near the device.

- Do not wrap cables around the body.

2.7 Compressed air cylinders

- Handle cylinders containing shielding gas with care and always secure them in an upright position.
- Only use matching pressure regulators and hoses.
- Do not touch the cylinder with the welding torch.

3. Assembly

3.1 Mains power

Connect the device to 230V, 50/60Hz, single phase, via a 16A delayed fuse or circuit breaker. Never remove the earth pin from the plug.

3.2 Extension cables

Preferably do not use an extension cord. If necessary, use a maximum of 7.5 metres (25 ft) of cord with a minimum cross-section of 3.3 mm² (12 AWG).

3.3 Workpiece preparation

- Thoroughly clean the surface of oil, rust, paint and dirt.
- For thick workpieces: grind a V-seam of approx. 60°.
- Preferably position in a flat position.

3.4 Ground connection

Remove rust or dirt from the contact point. Ensure good metal contact between the ground clamp and the workpiece.

3.5 Set the wire feed

1. Pull the trigger.
2. Adjust the wire tension with the rotary knob until the wire feeds smoothly without slipping.

3.6 Gas installation

- Connect the gas hose to the solenoid valve (rear) and the pressure regulator on the gas cylinder.
- Slowly open the cylinder and adjust the gas flow to 20 cfm (approx. 9.4 l/min).
- Close the bottle after use.

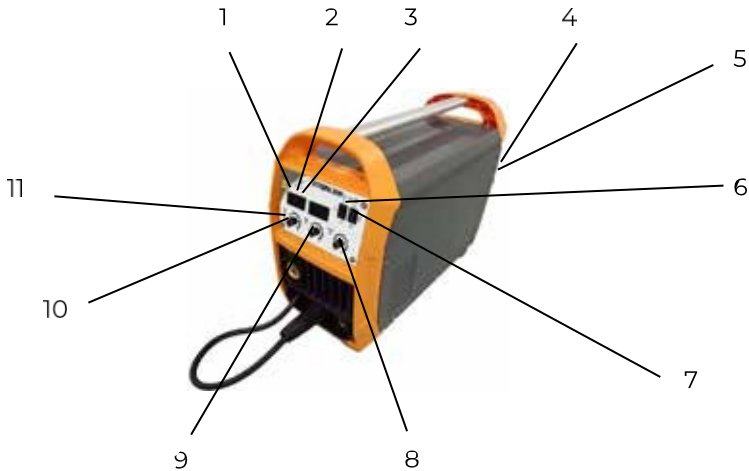
3.7 Polarity reversal

- For gasless welding (flux core): += mass, -= welding torch
- For MIG welding with gas: += welding torch, -= earth electrode

3.8 Suitable gases

- Steel: 75% argon / 25% CO₂ or 100% CO₂
- Stainless steel: Argon / CO₂ / Helium mixture

4. Use



1. Power indicator
2. Alarm indicator
3. Work indicator
4. Power
5. Power switch
6. MIG/MMA/TIG selector
7. 2T / 4T SPOT selector
8. SPOT timer
9. Welding voltage / ARC Force
10. Wire speed adjustment
11. Welding current

4.1 Main components and controls

- Main switch: switches the device on/off.
- Voltage setting: stepless arc voltage, see sticker in wire compartment.
- Wire speed: regulates wire feed and influences current.
- MIG/MMA/TIG switch: select the correct welding mode.
- 2T/4T/SPOT switch: choose between continuous or spot welding.
- SPOT timer: setting time for spot welding.

4.2 MIG welding

- Hold the torch at approx. 60°, max. 6 mm distance.
- Adjust the wire and voltage according to the specifications in the cover.
- Adjust the speed until a sharp hissing sound is heard.

4.3 MMA welding

- Use suitable electrodes (e.g. E6013 or E7018).
- Start the arc with a scraping motion, keeping a distance of 2–3 mm.
- Remove slag after each weld for a clean result.

4.4 TIG welding

Only possible with additional accessory package and correct connections.

5. Maintenance

5.1 Periodic maintenance

- Clean the housing monthly with a dry cloth.
- Blow out the interior every six months to remove dust.
- Replace cables or torches if visibly damaged.

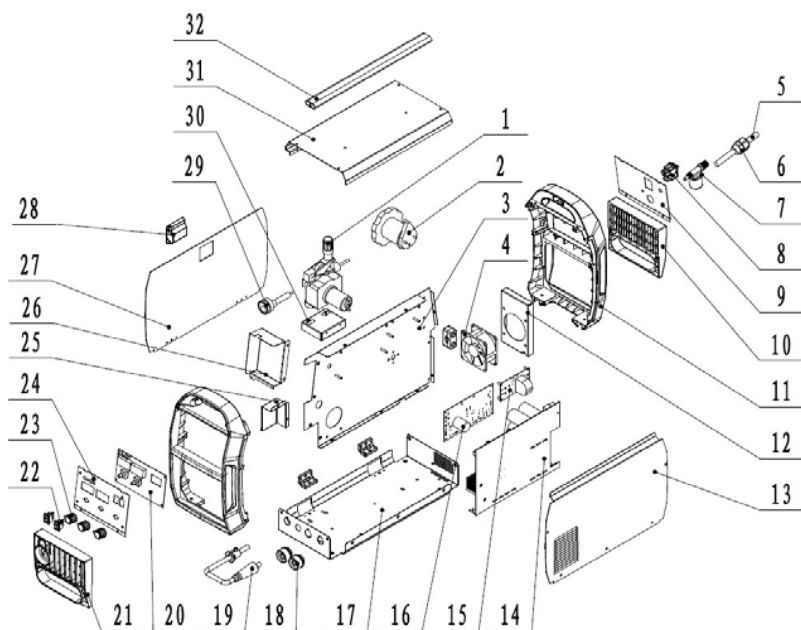
5.2 Storage and transport

- Store in a dry place at -12°C to +50°C.
- Relative humidity: <90%, no condensation.
- Clean and package as delivered.

6. Specifications

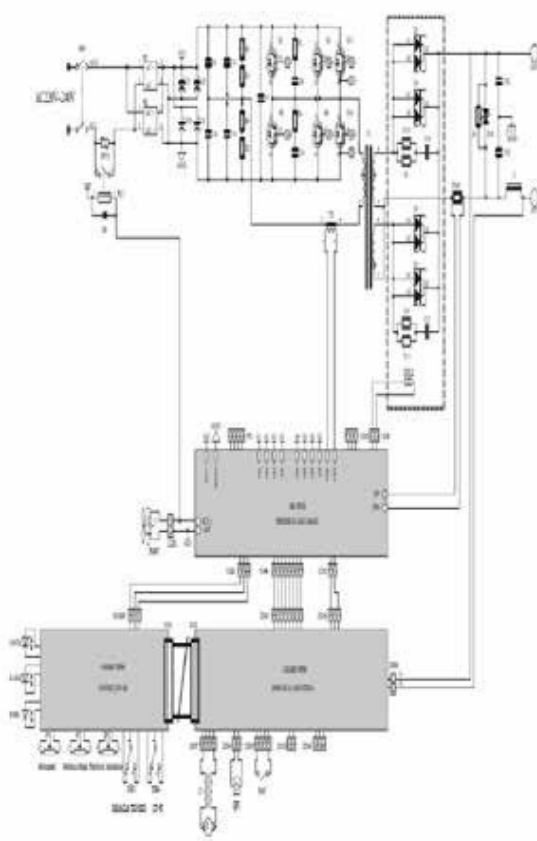
Model	EXTREMIG160WIII
Mains voltage:	230V, 50/60 Hz
Power:	up to 7.92 kVA
Open voltage:	65–71 V
Operating voltage:	22–24 V
MIG current:	30–200 A
MMA current:	30–170 A
TIG current:	20–200 A
Duty cycle:	15–20% at max. current
100% cycle:	approx. 72–80 A
Efficiency:	85
Cos ϕ :	0.7
IP rating:	IP21S
Dimensions:	490× 190× 335 mm
Weight	10.6 kg

7. Parts list



	#6	!1+#2\$9&,\$6*Z	&a mp; 4
1	0?0??A??<?<	wire feeder	1
0	20300030124	spool holder	1
<	11020013546	median septum	1
A	0???.?-J??0-	fan	1
B	20030320103	power line	1
>	0??A?<????-	Cable gland	1
	0???.?BB??<?< ;	solenoid valve	1
	0???.?-??0-	Rocker Switch	1
J	11010030231	Back plate	1
1	0??B??B?>Y ES	blinds	1
11	20050050691	Back plastic board	1
1	11010062519	Fixed fan plate	1
13	12010020019	Right side plate	1
14	11050021078	main control board	1
15	11050110512	EMC board	1
16	11050020838	Control board	1
17	12010040095	Base board	1
18	20070570197	Euro quick socket	0
19	12070030405	polarity conversion cable	1
0	11050070306 11050070307 11050070308	faceplate control board	1
2	0??B??B?.<0	blinds	1
0	0??<?<??.-?	welding mode change-over switch	0
0<	20070110068	potentiometer knob	
0	11010030228	Panel support plate	1
0B	11020013367	Shielding box	1
0>	11020013368	shielding box	1
0	12010020020	Left side plate	1
0	0??-???.??A	by latch	1
0J	12070024162	torch socket	
<?	11010062518	Fixed plate of wire feeder	1
31	11010011886	The top cover	1
<0	20020170021	handle	1

8. Connection diagram



9. Warranty conditions HUGONG

1. Warranty

We offer the following on all our products:

- 2-year standard warranty on manufacturing and material defects from the date of purchase
- 5-year extended warranty, provided the product is registered within 30 days of purchase
- The extended warranty is only valid for the original owner and is not transferable. For business applications, different terms may apply, unless otherwise agreed in writing.

2. Unique HUGONG warranty:

5 years with official purchase via official sales point HUGONGWELDS.EU The 5-year warranty on our HUGONG welding machines is unique in the market and underlines our commitment to quality, durability and service.

This comprehensive warranty applies only if:

- The machine was purchased from an authorised dealer listed on HUGONGWELDS.EU, the central platform for official HUGONG sales outlets and service partners.
- The product has been correctly registered online within 30 days of purchase
- Any repairs or maintenance are carried out exclusively by an authorised HUGONG service partner, as listed on HUGONG-WELDS.EU
- Repairs carried out by unauthorised parties will invalidate the warranty.
- The complete list of authorised dealers and service centres can be found at:
- www.hugongwelds.eu
- Purchases made through unauthorised sales channels or grey imports are not covered by the warranty conditions.
- Valkenpower B.V. is the official importer of HUGONG welding equipment for Western Europe. The 5-year extended warranty is provided exclusively by Valkenpower in collaboration with Hugong.

3. Warranty conditions (standard and extended)

To be eligible for warranty (standard or extended), the following conditions must be met:

- The product was purchased from a dealer recognised on HUGONG-WELDS.EU
- The product is used in accordance with the user manual and the prescribed maintenance instructions
- Maintenance and/or repairs are carried out exclusively by authorised HUGONG service partners
- For extended warranty: the product has been correctly registered within 30 days of purchase
- The original purchase invoice is available and can be provided.
- Please note: In the event of incorrect or improper use, the warranty will be void, including the standard warranty.

- If the product is not registered or is registered incorrectly within 30 days, only the standard 2-year warranty applies.

4. What does the warranty cover?

Within the valid warranty period, HUGONG covers:

- Manufacturing defects
- Material defects
- Functional defects under normal use We

will:

- Repair or replace the defective part
- Replace the entire product if necessary
- Or, in consultation, refund the purchase price (in part), minus depreciation
- The choice of solution is at the discretion of Valkenpower B.V. or an authorised service partner.

5. What is not covered by the warranty?

The warranty does not apply to:

- Normal wear and tear of parts such as:
- Electrodes, torches, cables, connectors, filters
- Hose couplings, switches, seals
- Water pumps in water coolers – these are considered wear parts
- Incorrect use, overloading or incorrect installation
- Modified or altered products without written permission
- Use of non-approved accessories or parts
- Ingress of dust, moisture or metal particles into the machine – this is not covered by the warranty and is considered user error
- Damage caused by external influences: moisture, dust, overheating, power surges, lightning, fire, corrosion or transport
- Use in rental applications, unless agreed in writing in advance

6. Warranty procedure

In the event of a defect:

Please contact our customer service or an authorised HUGONG dealer. Please provide the following:

- Proof of purchase
- Serial number (legible on type plate)
- Description of the problem and circumstances Shipping:
- The product must be returned safely packaged to the designated service point.
- Transport and shipping costs are at the customer's expense, unless otherwise agreed.
- During repair, there is no automatic right to a loan or replacement product.

7. Limitation of liability

HUGONG and Valkenpower are not liable for:

- Loss of income, consequential damage or business interruptions
- Costs for disassembly/assembly or adjustments
- Work carried out by third parties without written permission
- Claims exceeding the original purchase price
- Statutory consumer rights remain unaffected.

8. Warranty on parts and repairs

- Repaired or replaced parts retain the remaining warranty period of the original product.
- Separately purchased parts have a warranty period of 6 months.

9. Applicable law

These warranty conditions are governed by Dutch law. Disputes will preferably be resolved through consultation. If necessary, the matter may be submitted to the competent court in Roermond or to a recognised dispute resolution body.

Questions?

Our customer service team will be happy to help you. Visit:

www.hugongwelds.eu – for dealers, service partners and registration

EC Declaration of Conformity - Declaration of Conformity – EG-Konformitätserklärung - Declaration de conformité - Dichiarazion di conformita- Declaracion de conformidad

We, We, Wir, Nous, Noi, La empresa, **Valkenpower BV, Industrieweg 4, 6051 AE Maasbracht, Netherlands,** declare under our sole responsibility that the product declare under our sole responsibility that the product
erklären in alleiniger Verantwortung, dass das Produkt
déclarons sous notre seule responsabilité que le produit
dichiariamo sotto la nostra responsabilità che il prodotto
declare under our sole responsibility that the product

Type	Description	Brand
Model	Description	Brand
Type	Description	Marke
Type	Description	Marque
Tipo	Description	Marca
Tipo	MIG welding machine	Marca
EXTREMIG160III		Hugong

To which this declaration relates is in conformity with the following standards:
To which this declaration relates is in conformity with the following document: Auf welches sich diese Erklärung bezieht, den folgenden Normen entspricht: Auquel se réfère cette déclaration est conforme à le document suivant:
The declaration refers to the following documents:
The present declaration refers to the following documents:

Low Voltage Directive, Niederspannungsrichtlinie, la Directive Basse Tension, la direttiva bassa tensione, la norma Baja tensión:

2014/35/EC

Netherlands, Maasbracht, 05-08-2025

Serial number:

Director Valkenpower



B.A.H Valkenburg

Valkenpower BV, Industrieweg 4, 6051 AE Maasbracht, Netherlands

