



HUGONG



TYPE
PMIG200LCDIII



**Read this manual carefully before
using the product.**

Table of contents

Page

1	General	3
2.	Safety instructions	3
3.	Assembly	4
4.	Use	4
5.	Maintenance	4
6.	Specifications	5
7.	Parts drawing	5
8.	Circuit diagram	7
9.	Warranty	8
10.	EC declaration	11

Storing the user manual

- Keep the user manual in an accessible place, close to the product.
- Ensure that the manual is stored in a dry place.
- Use the manual carefully and avoid damage.
- The product must not be used by persons who are not familiar with the instructions and procedures in this manual.

This user manual is an integral part of the product and must therefore be kept in a safe place. If the product is transferred to another user, the manual must be included.

© 2025 HUGONG

All rights reserved. No part of this publication may be reproduced, stored in a computerised database or made public in any way without the prior written permission of the publisher, except as permitted by law.

1. General

Hugong PMIG200LCDIII

This manual contains important information about the safe and correct use of the Hugong PMIG200LCDIII. Read all instructions carefully before assembling or using the device. Keep this manual for future reference.

2. Safety instructions

2.1 Your welding environment

- Ensure that the welding environment is free of flammable materials.
- Always keep a fire extinguisher within reach.
- Have the device installed and operated by qualified personnel.
- Do not use the device in damp, wet or poorly ventilated areas.
- Ensure that the device is set up in a stable and safe manner.

2.2 Condition of your welding equipment

- Check cables and components for damage.
- Ensure that all parts are clean and in good working order.

2.3 Use of the welding machine

- Do not use the device if any parts are wet.
- Follow all instructions in this manual.
- Switch off the device when not in use.
- Wear suitable protective clothing, helmet, gloves and safety goggles.
- Avoid overheating by observing the working cycles.
- Never point the welding torch at people.

2.4 Specific hazards

- ****Electric shock****: Do not touch conductive material during welding. Wear insulating clothing and gloves.
- ****Fumes and gases****: Ensure adequate ventilation.
- ****UV and IR radiation****: Protect eyes and skin from harmful rays.
- ****Fire hazard****: Remove flammable materials within 35 cm of the welding site.
- ****Hot material****: Do not touch freshly welded parts with your bare hands.
- ****Spraying and sparks****: Wear protective clothing and ear protection.
- ****Electromagnetic fields****: Consult your doctor if you have a pacemaker.
- ****Gas cylinders****: Handle with care. Always secure in an upright position.

2.5 Maintenance and care

- Always switch off the power before maintenance.
- Only qualified personnel may perform maintenance.
- Do not modify the device.

3. Assembly

- Place the device on a dry and stable surface, free from corrosive vapours or flammable materials.
- Ensure adequate ventilation around the device (minimum 50 cm).
- Connect the power supply correctly to a grounded socket (min. 25A, ≥ 2.5 mm² cable).
- Install the wire feed correctly and with matching wire wheels, contact tips and wire diameters.
- Secure the welding torch and earth connection firmly and correctly.
- Ensure that all connections are airtight when using shielding gas.

4. Use

- Clean the workpiece and wire before welding.
- Adjust the wire tension, wire feed and gas flow before welding.
- Use the presets or manually adjust the current and voltage via the display.
- Switch from MIG to MMA using the selection menu on the front panel.
- During TIG welding, the current and induction can be adjusted.
- Ensure that fans and drive motors are checked regularly.

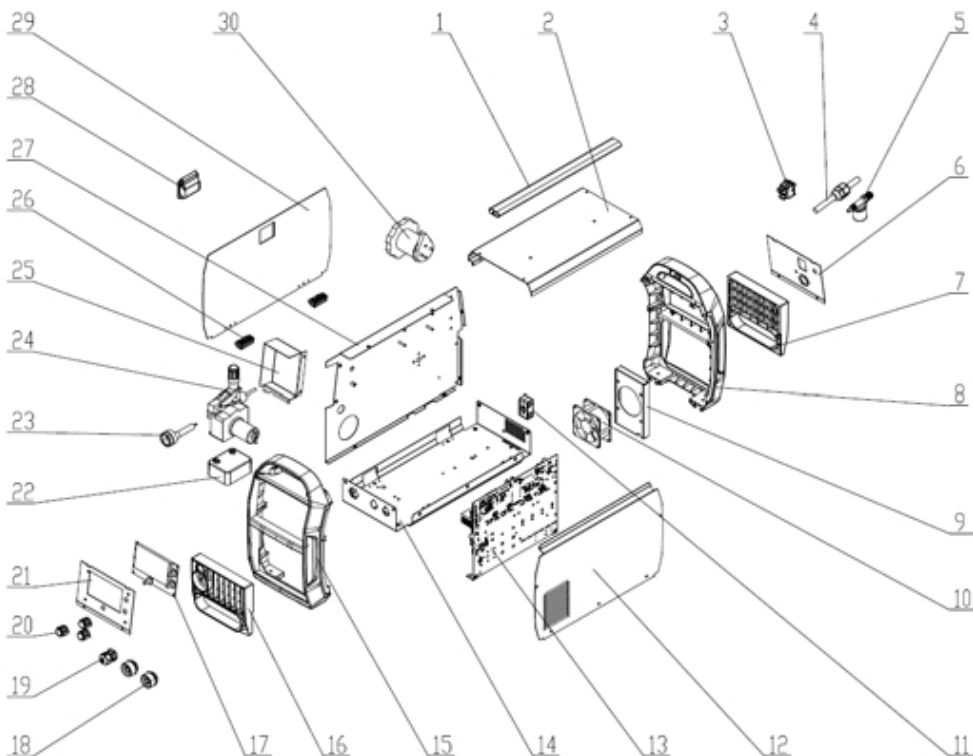
5. Maintenance

- Keep the device free of dust using dry compressed air.
- Regularly check cables, plugs, fans and moving parts.
- Replace worn wire wheels, contact tips and other consumable parts in good time.
- Do not lubricate any parts unless explicitly stated.
- Only use original or equivalent replacement parts.
- Do not make any modifications to the device.

6. Specifications

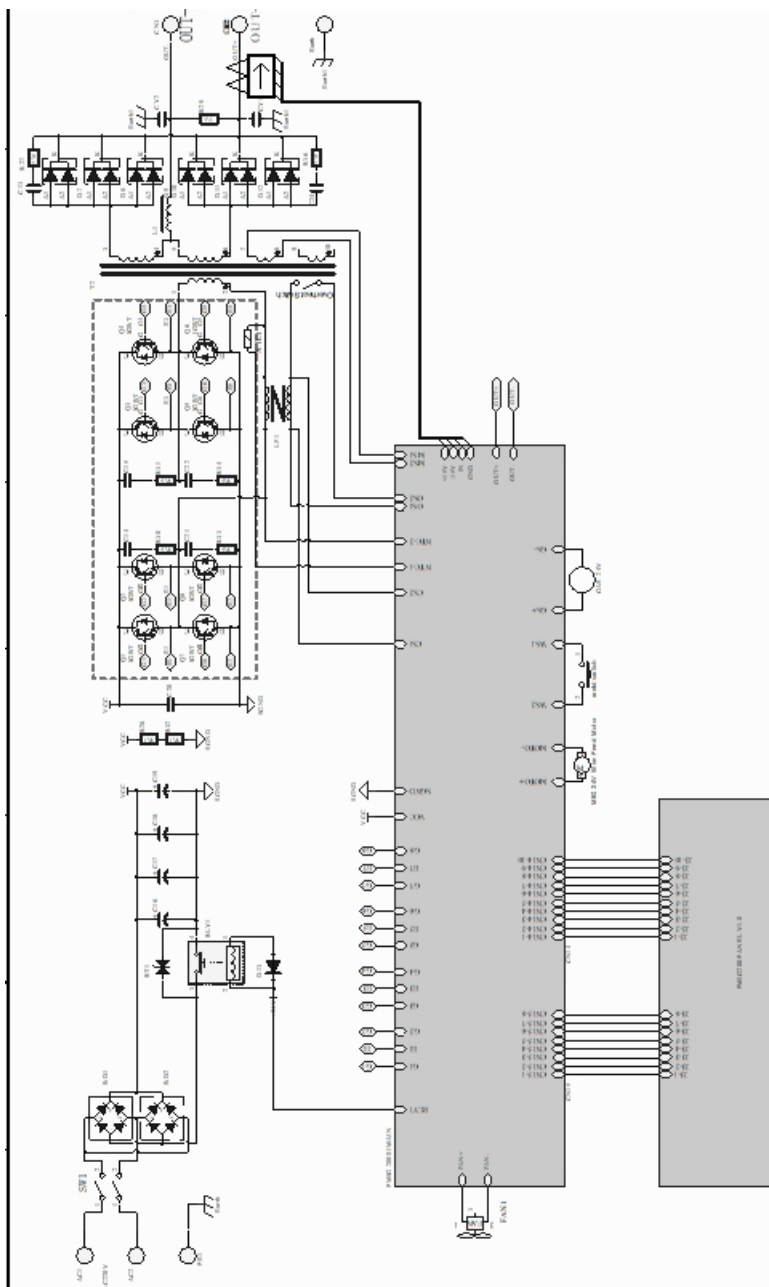
- Model: Hugong PMIG200LCDIII
- Input voltage: 230V, 50/60Hz
- Input: 8 KVA, 34.5 A
- Open clamp voltage: 71V
- Welding specifications:
 - MMA: 25–180A
 - MIG: 30–200A
 - TIG: 20–200A
- Duty cycle: 20% at 200A
- Efficiency: 80%
- Cos ϕ : ≥ 0.80
- Insulation class: F
- IP rating: IP21S
- Dimensions (L×W×H): 490 × 190 × 335 mm
- Weight: 11 kg

7. Parts drawing



NO.	CODE	DESCRIPTION	QTY
	20020170021	Handle tube	1
2	11010011886	Shell (top)	1
	20070800135	Rae:ker Switch	1
4	11110180104	Power input cable	1
3	12070024136	VaNe	1
6	11010030231	Back plate up fixed plate	1
7	200h00h0694	Window blind	1
8	20050050691	Plastic front frame	1
9	11020013448	Fan fixed box	1
10	J9Q/QQ9Q33 ij	Fan	1
11	9QQ5QJ/QQJ3	Cable ramp	2
12	11010020179	Right panel	1
13	11050021311	Main control PCB	1
14	11010042625	Bottom panel	1
15	20050050691	Plastic front frame	1
16	20050050732	Window blind	1
17	20070470018	Panel	1
18	20070570196	Quick socket	2
19	20040300007	Cable fixing head	1
	20070110075	Pp}gn\$gigg{er knob	3
	1101003340	Front plate up fixed plate	1
22	20300030019	Wire feeder fixed box assembly	1
23	12070020336	Torch socket nameplate	1
24	20200400019	Wire feeder	1
25	11020013368	Middle partition up fixed box	1
26	20050050091	Plastic hinge	1
27	tt0t0050472	Median septum	1
	20050050270	Door lock	1
	11010020180	Right panel	1
3	20050050779	Reel axis	1

8. Circuit diagram



9. HUGONG warranty conditions

1. Warranty period

We offer the following on all our products:

- 2-year standard warranty on manufacturing and material defects from the date of purchase
- 5-year extended warranty, provided the product is registered within 30 days of purchase
- The extended warranty is only valid for the original owner and is not transferable. For business applications, different terms may apply, unless otherwise agreed in writing.

2. Unique HUGONG warranty:

5 years with official purchase from an official HUGONGWELDS.EU sales point The 5-year warranty on our HUGONG welding machines is unique in the market and underlines our commitment to quality, durability and service.

This extended warranty applies only if:

- The machine was purchased from an authorised dealer listed on HUGONGWELDS.EU, the central platform for official HUGONG sales outlets and service partners.
- The product has been correctly registered online within 30 days of purchase.
- Any repairs or maintenance are carried out exclusively by an authorised HUGONG service partner, as listed on HUGONG-WELDS.EU
- Repairs carried out by unauthorised parties will invalidate the warranty.
- The complete list of authorised dealers and service points can be found at:
- www.hugongwelds.eu
- Purchases made through unauthorised sales channels or grey imports are not covered by the warranty conditions.
- Valkenpower B.V. is the official importer of HUGONG welding equipment for Western Europe. The 5-year extended warranty is provided exclusively by Valkenpower in collaboration with HUGONG.

3. Warranty conditions (standard and extended)

To claim warranty (standard or extended), the following conditions must be met:

- The product was purchased from a dealer recognised on HUGONG-WELDS.EU
- The product is used in accordance with the user manual and the prescribed maintenance instructions
- Maintenance and/or repairs are carried out exclusively by authorised HUGONG service partners
- For extended warranty: the product has been correctly registered within 30 days of purchase
- The original purchase invoice is available and can be presented

- Please note: In the event of incorrect or improper use, the warranty will be void, including the standard warranty.
- If the product is not registered or is registered incorrectly within 30 days, only the standard 2-year warranty applies.

4. What is covered by the warranty?

Within the valid warranty period, HUGONG covers:

- Manufacturing defects
- Material defects
- Functional defects under normal use

will:

- Repair or replace the defective part
- Replace the entire product if necessary
- Or, in consultation, refund the purchase price (in part), minus depreciation
- The choice of solution is at the discretion of Valkenpower B.V. or an authorised service partner.

5. What is not covered by the warranty?

The warranty does not apply to:

- Normal wear and tear of parts such as:
- Electrodes, torches, cables, connectors, filters
- Hose couplings, switches, seals
- Water pumps for water coolers – these are considered wear parts
- Incorrect use, overloading or incorrect installation
- Modified or altered products without written permission
- Use of non-approved accessories or parts
- Ingress of dust, moisture or metal particles into the machine – this is not covered by the warranty and is considered user error
- Damage caused by external influences: moisture, dust, overheating, power surges, lightning, fire, corrosion or transport
- Use in rental applications, unless agreed in writing in advance

6. Warranty procedure

In the event of a defect:

Please contact our customer service or an authorised HUGONG dealer.

Please provide the following:

- Proof of purchase
- Serial number (legible on the type plate)
- Description of the problem and the circumstances

Shipping:

- The product must be returned safely packaged to the designated service point.
- Transport and shipping costs are at the customer's expense, unless otherwise agreed.
- During repairs, there is no automatic right to a loan or replacement product.

product.

7. Limitation of liability

HUGONG and Valkenpower are not liable for:

- Loss of income, consequential damage or business interruptions
- Costs for disassembly/assembly or adjustments
- Work carried out by third parties without written permission
- Claims exceeding the original purchase price
- Statutory consumer rights remain unaffected.

8. Warranty on parts and repairs

- Repaired or replaced parts retain the remaining warranty period of the original product.
- Separately purchased parts have a warranty period of 6 months.

9. Applicable law

These warranty conditions are governed by Dutch law. Disputes will preferably be resolved through consultation. If necessary, the matter may be submitted to the competent court in Roermond or to a recognised dispute resolution body.

Questions?

Our customer service team will be happy to help you. Visit:

www.hugongwelds.eu – for dealers, service partners and registration

EC Declaration of Conformity – Declaration of Conformity
– EG- Konformitätserklärung – Declaration de conformité
- Declaration of conformity

We, We, Wir, Nous, Noi, La empresa,

Valkenpower BV, Industrierweg 4, 6051 AE Maasbracht, Netherlands,
declare under our sole responsibility that the product
erklären in alleiniger Verantwortung, dass das Produkt
déclarons sous notre seule responsabilité que le produit
dichiariamo sotto la nostra responsabilità che il prodotto
declare under our sole responsibility that the product

Type	Description	Brand
Model	Description	Brand
Type	Description	Marke
Type	Description	Marque
Tipo	Description	Marca
Tipo	Description	Marca
PMIG200LCDIII	MIG welding machine LCD Pulse 200A	Hugong

To which this declaration relates is in conformity with the following standards:
To which this declaration relates is in conformity with the following document:
Auf welches sich diese Erklärung bezieht, den folgenden Normen entspricht:
Auquel se réfère cette déclaration est conforme à le document suivant:
The declaration refers to the following documents:
The present declaration refers to the following documents:

Low Voltage Directive, Niederspannungsrichtlinie, la Directive Basse Tension, la direttiva bassa tensione, la norma Baja tensión:

2014/35/EC

Netherlands, Maasbracht, 14-08-2025

Director Valkenpower

Serial number:



B.A.H Valkenburg

Valkenpower BV, Industrierweg 4, 6051 AE Maasbracht, Netherlands

