



User Manual

Degreaser Tray 90Ltr

Type PW20E



Read this manual carefully before using the generator.

Table of contents	Page
1. Keeping the user manual	3
2. General description	4
3. Safety regulations	4
4. Environment & disposal	4
5. Symbols	5
6. Application	6
7. Parts	6
8. Parts list	7
9. Montage	8
10. Installation	8
11. Filling & commissioning	9
12. Use	9
13. Fire safety	9
14. Maintenance & inspection	10
15. Troubleshooting & Solutions	10
16. Guarantee	11
17. EC Declaration	12

1. Keep the user manual

Keep this user manual in a safe place. The information in this document may be necessary for installation, operation, maintenance, or troubleshooting. Keep this manual accessible at all times for future reference. This user manual contains important safety instructions and legal information. Keep this document for the entire life of the product. Always provide this manual if the product is resold, transferred, or relocated. It is mandatory to keep this user manual in a centrally accessible location. Personnel working with this product must have access to the most recent version of this documentation at all times.



Dispose of electrical appliances in an environmentally friendly manner. Do not dispose of electrical appliances with household waste. In accordance with European Directive 2012/19/EU on electronic appliances, they must be collected separately for recycling. Contact your local authorities for available disposal options for your worn-out appliance.

© 2025 Mammuth All rights reserved. No part of this publication may be reproduced, stored in a retrieval system, or transmitted in any form or by any means without the express prior written permission of the publisher, except in cases where legally permitted.

2. General description

This is an electric parts washer for cleaning metal and mechanical parts in workshops and garages. The device consists of a steel basin with a hinged lid, an electric pump, and a flexible hose that flushes cleaning fluid over the parts. The fluid is collected and reused. The basin stands on a sturdy base with a shelf and operates on 230 V with an on/off switch.

3. Safety regulations

- Wear gloves and safety glasses.
- Use only in a well ventilated area.
- Do not smoke near or while using the degreaser.
- Do not use near heating equipment or open flames.
- Never work on the container with the plug connected.
- Avoid overloading the container.
- Only allow authorized personnel to work on the degreaser tank.
- When carrying out repairs, always use original parts.

Important

- **The spring/lid system is designed to hold the hood open during use.**
- **Always close after use.**
- **Prohibited: leaving the degreaser container open unattended.**

Caution! The degreaser tray is intended for cleaning/degreasing parts with a suitable (preferably water-based), non-aggressive cleaning fluid with a flash point above 66.5°C. The fluid is circulated via a pump and nozzle/outlet.

4. Environment & disposal

Dispose of used degreasing agents according to applicable environmental regulations. Do not discharge into sewers.

4.5. Symbols



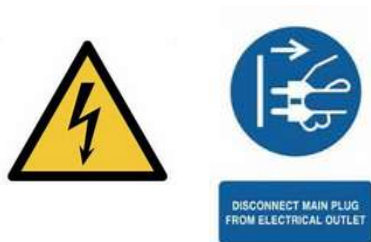
Mandatory: Wear gloves and safety glasses



Mandatory: Use ventilation / extraction
Warning of dangerous fumes



No smoking or open flames in the area



Warning for electricity
Unplug the power cord



General warning
Prevent overload

6. Application

Suitable for:

Workshops and maintenance areas

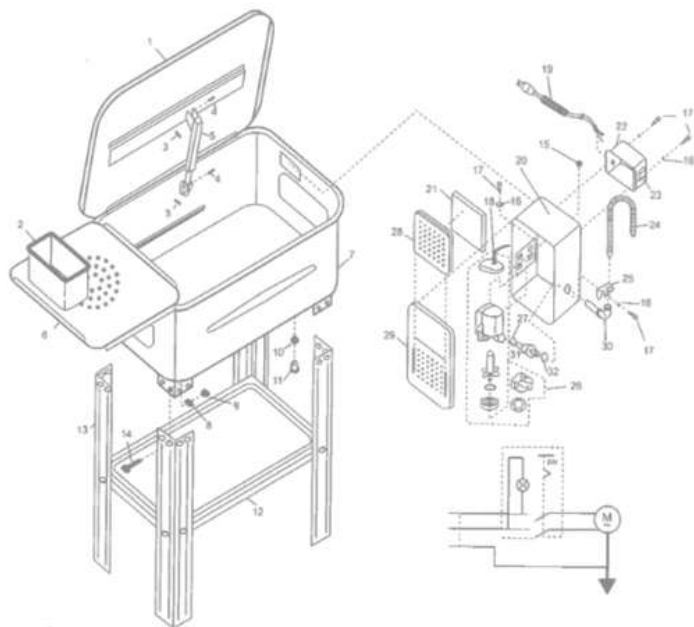
- Cleaning metal parts
- Removing oil, grease and dirt

Not suitable for:

Flammable or explosive liquids

- Strongly corrosive agents
- Plastics that cannot withstand degreaser

7. Parts

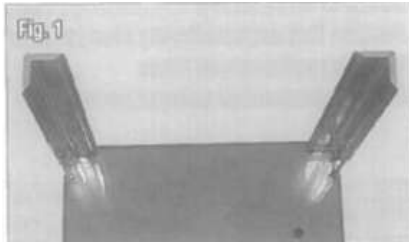


- | | |
|----------------------|-----------------------------|
| 1. Lid | 19. Power cord |
| 2. Parts tray | 20. Pump housing |
| 3. Pin spring | 21. Filter |
| 4. Pin | 22. Switch cabinet |
| 5. Hinge with fuse | 23. On/off switch |
| 6. Rooster | 24. Flexible hose |
| 7. Behind | 25. Connection bracket |
| 8. Ring | 26. Degreaser pump complete |
| 9. Nut | 27. Ring |
| 10. O-ring | 28. Filter cover |
| 11. Drain plug | 29. Front cover |
| 12. Shelf | 30. Kneecap |
| 13. Hate | 31. Adapter |
| 14. Bout | 32. Ring |
| 15. Nut | |
| 16. Ring | |
| 17. Screw | |
| 18. Connection piece | |

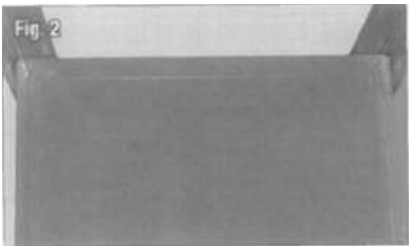
8. Parts list

1.	PPW20E-01	Lid
2.	PPW20E-02	Parts tray
3.	PPW20E-03	Pin spring
4.	PPW20E-04	Pin
5.	PPW20E-05	Hinge with fuse
6.	PPW20E-06	Rooster
7.	PPW20E-07	Behind
8.	PPW20E-08	Ring
9.	PPW20E-09	Nut
10.	PPW20E-10	O-ring
11.	PPW20E-11	Drain plug
12.	PPW20E-12	Shelf
13.	PPW20E-13	Hate
14.	PPW20E-14	Bout
15.	PPW20E-15	Nut
16.	PPW20E-16	Ring
17.	PPW20E-17	Screw
18.	PPW20E-18	Connection piece
19.	PPW20E-19	Power cord
20.	PPW20E-20	Pump housing
21.	PPW20E-21	Filter
22.	PPW20E-22	Switch cabinet
23.	PPW20E-23	On/off switch
24.	PPW20E-24	Flexible hose
25.	PPW20E-25	Connection bracket
26.	PPW20E-26	Degreaser pump complete
27.	PPW20E-27	Ring
28.	PPW20E-28	Filter cover
29.	PPW20E-29	Front cover
30.	PPW20E-30	Kneecap
31.	PPW20E-31	Adapter
32.	PPW20E-32	Ring

9. Montage



1. Place the tub upside down on cardboard/carpet. See image 1.
2. Assemble the 4 legs with bolts/washers and nuts.

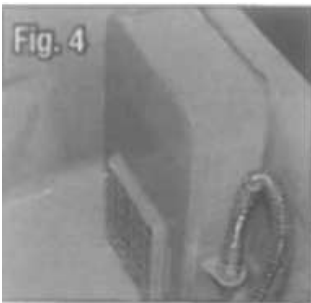


3. Assemble the platform. See image 2.



4. Stand the unit upright and open the lid.
5. Install the flexible spout onto the pump outlet and place the pump cover correctly

10. Installation



1. Check that the switch is accessible from outside and that the cable is free. See images 4 & 5.

2. Check that the drain plug is properly secured.



3. Place the grille and point the nozzle inward. See image 6
3. *brush and hose are optional accessories BPW5

11. Filling & commissioning

1. Fill with a suitable fluid until just below the parts shelf. We recommend EUROL HF Plus.
2. Make sure that the pump inlet is sufficiently submerged in liquid.
3. Connect to a grounded outlet.
4. Turn the switch to ON.

12. Use

1. Open the lid.
2. Place the part in the degreaser tray.
3. Turn the switch to ON.
4. Clean the part with the flexible rinse hose.
5. Let the liquid drain back into the container
6. Turn the switch to OFF after use.
7. Close the lid.
8. Clean up spilled liquid immediately.

13. Fire safety

- The lid holder contains a fuse that will close the lid in the event of a fire. This fuse is not resettable and must be replaced after activation.
- Do not place the unit near open flames, sparks or other flammable conditions.
- Closing the lid can limit the spread of fire.
- Make sure that appropriate fire extinguishing equipment is available at the degreaser tank.
- Close the lid after each use.

14. Maintenance & inspection

- Always unplug before maintenance/cleaning.
- Clean the pump filter regularly (according to the instructions).
- Do not allow the fluid level to drop below the pump inlet.
- Repair/parts: only by authorized personnel and with original parts.
- Check regularly that all moving parts of the lid are functioning properly and that the lid can move freely without any blockages.
- Do not make any modifications to the lid, spring mechanism, or fusible link.
- Do not place any objects in or on the container that could prevent the lid from closing (completely).

15. Troubleshooting and solutions

Fault	Cause	Solution
Pump not working	No tension	Check plug/fuse
Low flow	Filter dirty	Clean filter
Poor cleaning	Fluid contaminated	Replace fluid
Leakage	Drain plug loose	Tighten

16. Warranty

Warranty Terms and Conditions

1. This warranty shall enter into force on the date stated on the original purchase invoice and shall remain valid for a period of twelve (12) months.
2. This warranty is non-transferable unless prior written consent has been obtained from the supplier.
3. Warranty claims will not be accepted without presentation of the original purchase invoice.
4. This warranty shall apply exclusively provided that the product has been used in full compliance with the instructions contained in the user manual and solely for its intended purpose.
5. No alterations, modifications, or technical changes may be made to the product.
6. This warranty shall be void in the event of improper, negligent, or incorrect use of the product.
7. Transportation, shipping, and related costs are expressly excluded from this warranty.
8. Any repair work must be carried out exclusively by the supplier or an authorised service partner. Repairs performed by unauthorised third parties shall immediately void all warranty rights.
9. Repairs performed during the warranty period shall not result in an extension of the original warranty period. However, a separate warranty period of three (3) months shall apply to the repaired components, provided that the original warranty period has expired.
10. All maintenance and servicing operations described in the user manual must be performed in a timely and proper manner. Failure to do so may result in the warranty becoming void.
11. Warranty claims may only be submitted to the original point of sale at which the product was purchased.

**EG-verklaring van overeenstemming - Declaration of conformity –
Konformitätsverklärung - Declaration de conformite - Dichiarazione di
conformita- Declaracion de conformidad**

Wij, We, Wir, Nous, **Valkenpower BV, Haverkamp 11, 6051 AC Maasbracht, Nederland**, verklaren geheel onder eigen verantwoordelijkheid dat de producten, declare under our sole responsibility that the products, erklären in voller eigener Verantwortung, dass die Produkte, déclarons sous notre entière responsabilité que les produits

Type Model Art Type	Beschrijving Description Beschreibung Description	Merk Brand Marke Marque
PW20E	Ontvetterbak 90ltr	Mammuth
PW20E	Degreasing tank	Mammuth
PW20E	Entfettungswanne	Mammuth
PW20E	Cuve de dégraissage	Mammuth

Waarop deze verklaring betrekking heeft, in overeenstemming zijn met de volgende normen: To which this declaration relates, are in conformity with the following standards: Auf die sich diese Erklärung bezieht, den folgenden Normen entsprechen: Auxquels la présente déclaration se rapporte, sont conformes aux normes suivantes

De machinerichtlijn: Following the provisions of Directive: Gemäß den Bestimmungen der Richtlinie:
Conformément aux dispositions de la Directive:
2006/95/EG

Directeur Valkenpower



B.A.H Valkenburg

Nederland, Maasbracht, 05-04-2018