



# User Manual Degreaser Tray 150Ltr Type PW40E



**Read this manual carefully before using the generator.**

<b>Table of contents</b>	<b>Page</b>
1. Keeping the user manual	3
2. General description	4
3. Safety regulations	4
4. Environment & disposal	4
5. Symbols	5
6. Application	6
7. Parts	6
8. Parts list	7
9. Montage	8
10. Installation	8
11. Filling & commissioning	9
12. Use	9
13. Fire safety	9
14. Maintenance & inspection	10
15. Troubleshooting & Solutions	10
16. Guarantee	11
17. EC Declaration	12

## 1. Keep the user manual

Keep this user manual in a safe place. The information in this document may be necessary for installation, operation, maintenance, or troubleshooting. Keep this manual accessible at all times for future reference. This user manual contains important safety instructions and legal information. Keep this document for the entire life of the product. Always provide this manual if the product is resold, transferred, or relocated. It is mandatory to keep this user manual in a centrally accessible location. Personnel working with this product must have access to the most recent version of this documentation at all times.



Dispose of electrical appliances in an environmentally friendly manner. Do not dispose of electrical appliances with household waste. In accordance with European Directive 2012/19/EU on electronic appliances, they must be collected separately for recycling. Contact your local authorities for available disposal options for your worn-out appliance.

© 2025 Mammuth All rights reserved. No part of this publication may be reproduced, stored in a retrieval system, or transmitted in any form or by any means without the express prior written permission of the publisher, except in cases where legally permitted.

## 1.2. General description

This appliance is an electric parts washer for use in workshops and garages. It is designed for cleaning metal and mechanical parts using a circulating cleaning fluid.

The sink is made of steel and features a hinged lid, an electric pump, and a flexible hose with a spout or brush. The liquid is circulated and reused. The appliance operates on 230 V and has an on/off switch. A base with a shelf provides stability and additional storage space.

## 2.3. Safety regulations

- Wear gloves and safety glasses.
- Use only in a well ventilated area.
- Do not smoke near or while using the degreaser.
- Do not use near heating equipment or open flames.
- Never work on the container with the plug connected.
- Avoid overloading the container.
- Only allow authorized personnel to work on the degreaser tank.
- When carrying out repairs, always use original parts.

### **Important**

**The spring/lid system is designed to hold the hood open during use.**

- **Always close after use.**
- **Prohibited: leaving the degreaser container open unattended.**

**Caution! The degreaser tray is intended for cleaning/degreasing parts with a suitable (preferably water-based), non-aggressive cleaning fluid with a flash point above 66.5°C. The fluid is circulated via a pump and nozzle/outlet.**

## 12.4. Environment & disposal

Dispose of used degreasing agents according to applicable environmental regulations. Do not discharge into sewers.

#### 4.5. Symbols



Mandatory: Wear gloves and safety glasses



Mandatory: Use ventilation / extraction  
Warning of dangerous fumes



No smoking or open flames in the area



Warning for electricity  
Unplug the power cord



General warning  
Prevent overload

## 2.6. Application

Suitable for:

Workshops and maintenance areas

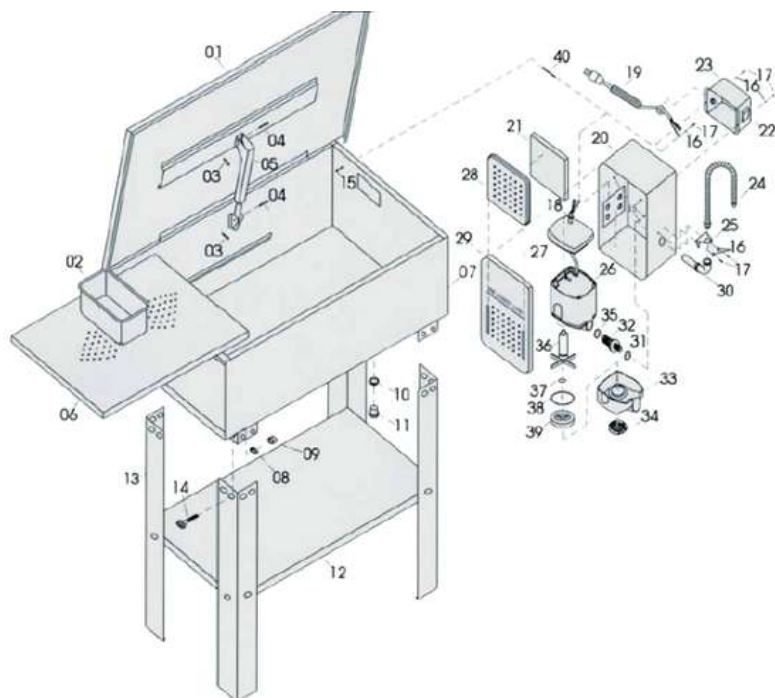
- Cleaning metal parts
- Removing oil, grease and dirt

Not suitable for:

Flammable or explosive liquids

- Strongly corrosive agents
- Plastics that cannot withstand degreaser

## 3.7. Parts



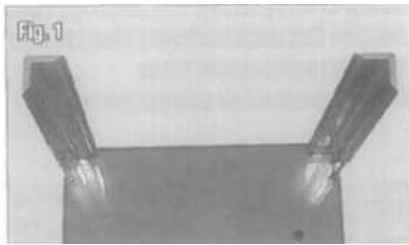
- |                            |                                  |                            |
|----------------------------|----------------------------------|----------------------------|
| 1. Lid                     | 16. Spring                       | 31. O-ring                 |
| 2. Component tray          | 17. Screw                        | 32. Outlet (spout)         |
| 3. Spring pin              | 18. Through-feed (rubber sleeve) | 33. Pump housing*          |
| 4. Rivet                   | 19. Power cable & plug           | 34. Pump filter*           |
| 5. Hinge with thermal fuse | 20. Pump housing                 | 35. Gasket                 |
| 6. Booster                 | 21. Filter                       | 36. Pump impeller*         |
| 7. Tray                    | 22. Switch                       | 37. Pump spacer*           |
| 8. Spring                  | 23. Switching housing            | 38. Pump seal*             |
| 9. Nut                     | 24. Flexible hose                | 39. Pump impeller housing* |
| 10. O-ring                 | 25. Mounting bracket             | 40. Condensate drain       |
| 11. Drain plug             | 26. Pump housing*                |                            |
| 12. Board                  | 27. Pump cover*                  |                            |
| 13. Leg                    | 28. Filter cover                 |                            |
| 14. Screw                  | 29. Pump housing cover           |                            |
| 15. Nut                    | 30. Elbow fitting                |                            |

\* Complete pump assembly

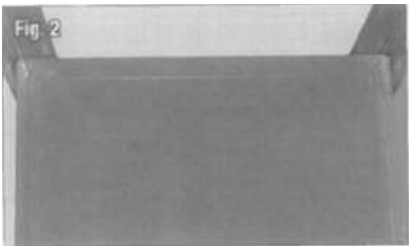
## 8. Parts list

1.	PPW40E-01	Lid
2.	PPW40E-02	Component tray
3.	PPW40E-03	Spring pin
4.	PPW40E-04	Rivet
5.	PPW40E-05	Hinge with thermal fuse
6.	PPW40E-06	Booster
7.	PPW40E-07	Tray
8.	PPW40E-08	Spring
9.	PPW40E-09	Nut
10.	PPW40E-10	O-ring
11.	PPW40E-11	Drain plug
12.	PPW40E-12	Board
13.	PPW40E-13	Leg
14.	PPW40E-14	Screw
15.	PPW40E-15	Nut
16.	PPW40E-16	Spring
17.	PPW40E-17	Screw
18.	PPW40E-18	Through-feed (rubber sleeve)
19.	PPW40E-19	Power cable & plug
20.	PPW40E-20	Pump housing
21.	PPW40E-21	Filter
22.	PPW40E-22	Switch
23.	PPW40E-23	Switching housing
24.	PPW40E-24	Flexible hose
25.	PPW40E-25	Mounting bracket
26.	PPW40E-26	Pump housing*
27.	PPW40E-27	Pump cover*
28.	PPW40E-28	Filter cover
29.	PPW40E-29	Pump housing cover
30.	PPW40E-30	Elbow fitting
31.	PPW40E-31	O-ring
32.	PPW40E-32	Outlet (spout)
33.	PPW40E-33	Pump housing*
34.	PPW40E-34	Pump filter*
35.	PPW40E-35	Gasket
36.	PPW40E-36	Pump impeller*
37.	PPW40E-37	Pump spacer*
38.	PPW40E-38	Pump seal*
39.	PPW40E-39	Pump impeller housing*
40.	PPW40E-40	Condensate drain

## 9. Montage



1. Place the tub upside down on cardboard/carpet. See image 1.
2. Assemble the 4 legs with bolts/washers and nuts.

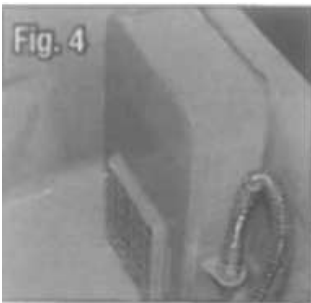


3. Assemble the platform. See image 2.



4. Stand the unit upright and open the lid.
5. Install the flexible spout onto the pump outlet and place the pump cover correctly

## 10. Installation



1. Check that the switch is accessible from outside and that the cable is free. See images 4 & 5.

2. Check that the drain plug is properly secured.



3. Place the grille and point the nozzle inward. See image 6
4. \*brush and hose are optional accessories BPW5



## **11. Filling & commissioning**

1. Fill with a suitable fluid until just below the parts shelf. We recommend EUROL HF Plus.
2. Make sure that the pump inlet is sufficiently submerged in liquid.
3. Connect to a grounded outlet.
4. Turn the switch to ON.

## **12. Use**

1. Open the lid.
2. Place the part in the degreaser tray.
3. Turn the switch to ON.
4. Clean the part with the flexible rinse hose.
5. Let the liquid drain back into the container
6. Turn the switch to OFF after use.
7. Close the lid.
8. Clean up spilled liquid immediately.

## **13. Fire safety**

- The lid holder contains a fuse that will close the lid in the event of a fire. This fuse is not resettable and must be replaced after activation.
- Do not place the unit near open flames, sparks or other flammable conditions.
- Closing the lid can limit the spread of fire.
- Make sure that appropriate fire extinguishing equipment is available at the degreaser tank.
- Close the lid after each use.

#### 14. Maintenance & inspection

- Always unplug before maintenance/cleaning.
- Clean the pump filter regularly (according to the instructions).
- Do not allow the fluid level to drop below the pump inlet.
- Repair/parts: only by authorized personnel and with original parts.
- Check regularly that all moving parts of the lid are functioning properly and that the lid can move freely without any blockages.
- Do not make any modifications to the lid, spring mechanism, or fusible link.
- Do not place any objects in or on the container that could prevent the lid from closing (completely).

#### 15. Troubleshooting and solutions

Fault	Cause	Solution
Pump not working	No tension	Check plug/fuse
Low flow	Filter dirty	Clean filter
Poor cleaning	Fluid contaminated	Replace fluid
Leakage	Drain plug loose	Tighten

## 16. Warranty

### Warranty Terms and Conditions

1. This warranty shall enter into force on the date stated on the original purchase invoice and shall remain valid for a period of twelve (12) months.
2. This warranty is non-transferable unless prior written consent has been obtained from the supplier.
3. Warranty claims will not be accepted without presentation of the original purchase invoice.
4. This warranty shall apply exclusively provided that the product has been used in full compliance with the instructions contained in the user manual and solely for its intended purpose.
5. No alterations, modifications, or technical changes may be made to the product.
6. This warranty shall be void in the event of improper, negligent, or incorrect use of the product.
7. Transportation, shipping, and related costs are expressly excluded from this warranty.
8. Any repair work must be carried out exclusively by the supplier or an authorised service partner. Repairs performed by unauthorised third parties shall immediately void all warranty rights.
9. Repairs performed during the warranty period shall not result in an extension of the original warranty period. However, a separate warranty period of three (3) months shall apply to the repaired components, provided that the original warranty period has expired.
10. All maintenance and servicing operations described in the user manual must be performed in a timely and proper manner. Failure to do so may result in the warranty becoming void.
11. Warranty claims may only be submitted to the original point of sale at which the product was purchased.

**EG-verklaring van overeenstemming - Declaration of conformity –  
Konformitätsverklärung - Declaration de conformite - Dichiarazione di  
conformita- Declaracion de conformidad**

Wij, We,Wir,Nous,**Valkenpower BV, Haverkamp 11, 6051 AC Maasbracht, Nederland**, verklaren geheel onder eigen verantwoordelijkheid dat de producten, declare under our sole responsibility that the products, erklären in voller eigener Verantwortung, dass die Produkte, déclarons sous notre entière responsabilité que les produits

Type Model Art Type	Beschrijving Description Beschreibung Description	Merk Brand Marke Marque
<b>PW40E</b>	<b>Ontvetterbak 150 ltr</b>	<b>Mammuth</b>
<b>PW40E</b>	<b>Degreasing tank</b>	<b>Mammuth</b>
<b>PW40E</b>	<b>Entfettungswanne</b>	<b>Mammuth</b>
<b>PW40E</b>	<b>Cuve de dégraissage</b>	<b>Mammuth</b>

Waarop deze verklaring betrekking heeft, in overeenstemming zijn met de volgende normen:To which this declaration relates, are in conformity with the following standards:Auf die sich diese Erklärung bezieht, den folgenden Normen entsprechen:Auxquels la présente déclaration se rapporte, sont conformes aux normes suivantes

De machinerichtlijn: Following the provisions of Directive: Gemäß den Bestimmungen der Richtlinie: Conformément aux dispositions de la Directive:  
**2006/95/EG**

*Directeur Valkenpower*



*Nederland, Maasbracht, 05-04-2018*

*B.A.H Valkenburg*