

# User Manual

## Stainless Steel Wet Blasting Cabinet Type AB19A



**Read this manual carefully before using the generator.**

<b>Table of contents</b>	<b>Page</b>
1. Keeping the user manual	3
2. General description	4
3. Application and main features	4
4. Safety regulations	4
5. Symbols	5
6. Environment & disposal	5
6.1 Legionella Prevention Aquablast	5
7. Overview of the device	6
7.1 Product description	6
7.2 Main components	6
7.3 Control panel	6
8. Montage	7
9. Preparation before use	7
10. Putting into use	8
10.1 Startup	8
10.2 Operation during use	8
11. Turn off	8
12. Emergency procedure	8
13. Maintenance and replacement of solvent	9
14. Problem solving	10
15. Technical specifications	11
16. Wiring diagram	12
17. Parts	13
18. Parts list	13
19. Guarantee	14
20. EC declaration	15

## 1. Keep the user manual

Keep this user manual in a safe place. The information in this document may be necessary for installation, operation, maintenance, or troubleshooting. Keep this manual accessible at all times for future reference. This user manual contains important safety instructions and legal information. Keep this document for the entire life of the product. Always provide this manual if the product is resold, transferred, or relocated. It is mandatory to keep this user manual in a centrally accessible location. Personnel working with this product must have access to the most recent version of this documentation at all times.



Dispose of electrical appliances in an environmentally friendly manner. Do not dispose of electrical appliances with household waste. In accordance with European Directive 2012/19/EU on electronic appliances, they must be collected separately for recycling. Contact your local authorities for available disposal options for your worn-out appliance.

© 2026 Airpro All rights reserved. No part of this publication may be reproduced, stored in a retrieval system, or transmitted in any form or by any means without the express prior written permission of the publisher, except in cases where otherwise permitted by law.

## **2. General description**

This stainless steel wet blast cabinet is a closed blasting system used for cleaning, matting, and refining surfaces using a water abrasive mixture. Wet blasting prevents dust formation and creates an even and controlled blast pattern.

## **3. Application and main features**

- environmental protection,
- high efficiency,
- wide applicability
- good surface treatment result.

### **Environmental protection**

The wet blast cabinet uses a mixed cleaning solution of water and sand, which does not produce harmful gases or dust, so as not to pollute the environment and meet the environmental protection requirements of modern industry.

### **High efficiency**

Wet blast cabinets quickly remove dirt and oxide layers from the surface, improving work efficiency and accelerating the processing process.

### **Wide applicability**

Blast cabinets can treat all kinds of materials, such as metal, glass, ceramics, plastics, etc. Due to their wide applicability, they are used in many industrial sectors.

### **Wide surface treatment**

The general sandblasting machine can make the surface of the workpiece rough, the wet blast cabinet can play a polishing cleaning and dust removing role, and make the surface smoother, thus improving the product quality to meet the high requirements for surface finish.

## **4. Safety regulations**

- Make sure that the street cabinet does not deviate horizontally by more than 2 degrees.
- Never exceed the maximum permitted air pressure.
- Keep the workspace clean. Cluttered areas and workbenches can cause accidents.
- Keep children away. All visitors must be kept a safe distance from the work area.
- Use the correct tools. Do not force the wet blast machine or attachment to perform tasks for which it was not designed.
- When using organic blasting materials, use our approved hose components.
- Wear protective gloves. Do not use damaged gloves.

## 5. Symbols



Mandatory: Wear safety glasses



No smoking or open flames in the area



Warning for electricity

## 6. Environment & disposal

Used blast media is considered waste and must be disposed of in accordance with applicable environmental and waste regulations. The disposal method depends on the type of blast media and the contamination created during blasting.

### 6.1 Legionella Prevention - Aquablast

When using water in the AquaBlast, attention must be paid to preventing the growth of Legionella. Legionella can develop in stagnant water at temperatures between 25 °C and 45 °C.

**To reduce the risk, the following measures are recommended:**

- Preferably use fresh mains water and prevent prolonged stagnation (no longer than 3–5 days) of water in the system.
- Flush the system before commissioning, especially after periods of inactivity.
- Ensure regular cleaning and, where applicable, disinfection of water-carrying components.
- Fully drain the system after use and avoid leaving residual water behind.
- Always follow the applicable guidelines and regulations for Legionella prevention.

## 7. Overview of the device

### 7.1 Product description

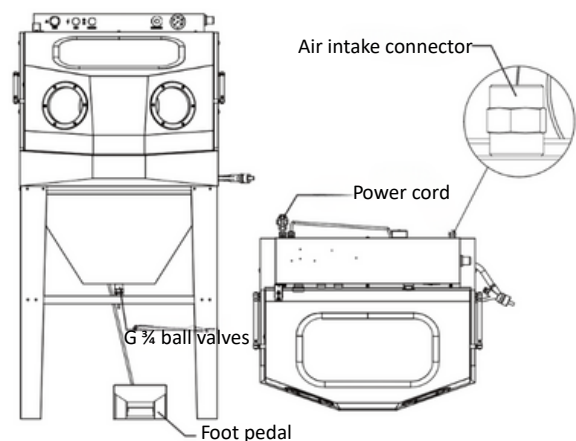
This product is a closed working/cleaning unit with:

- compressed air regulation,
- pump operation,
- window cleaning,
- safety features (emergency stop).

The unit is equipped with a control panel, air and power connections and a foot pedal for operation.

### 7.2 Main components

- Air inlet connector – connection for compressed air.
- Power cord – electrical power cord.
- G 3/4 ball valves – air/medium shut-off valves.
- Foot pedal – control for hands-free activation.



### 7.3 Control panel

**Power switch:** Turns the device on and off.

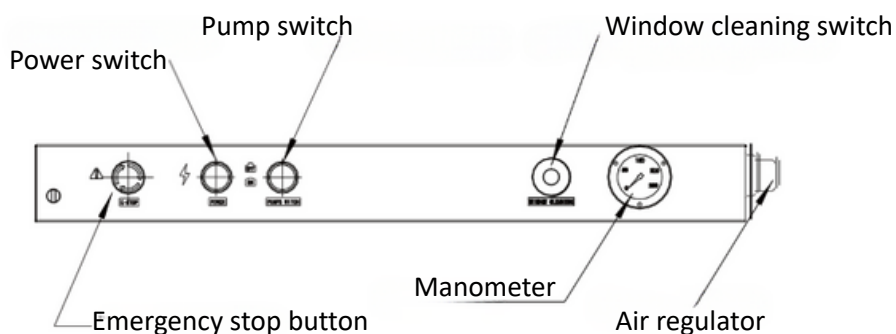
**Pump switch:** Activates the internal pump.

**Window cleaning switch:** Operates the window cleaning function.

**Emergency stop button:** Stops the unit immediately in case of emergency.

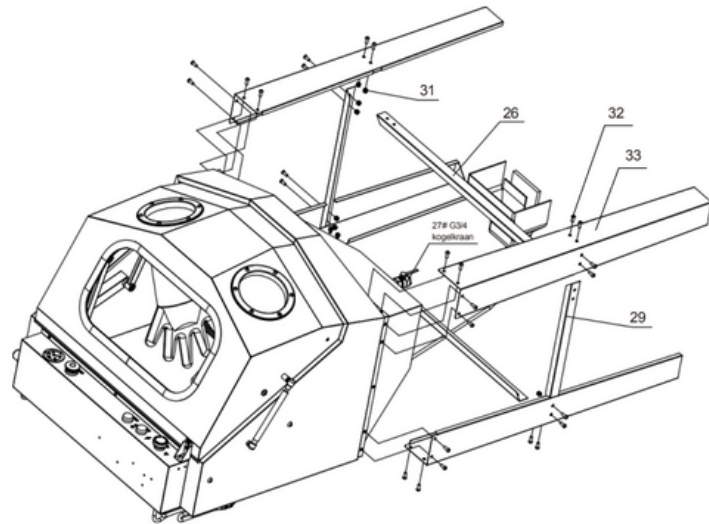
**Manometer:** Displays the current air pressure.

**Air regulator:** Regulates the working pressure of the compressed air.



## 8. Montage

1. Lay the cabinet down and mount 4 support feet (#33) to the cabinet with M6\*16 screws (#32).  
**Tighten the screws hand-tight.**
2. Mount 2 short reinforcement rods and 2 long reinforcement rods with M6\*16.  
**Tighten the screws hand-tight.**
3. Stand the cabinet upright and tighten all fasteners.
4. Connect the ball valve (#27) to the bottom of the funnel with Teflon tape.
5. Remove the protective layer from the stainless steel.



## 9. Preparation before use

1. Place the appliance on a stable, flat surface.
2. Check that all ball valves are closed.
3. Connect the air inlet connector to a suitable compressed air source.
4. Connect the power cord to a grounded electrical outlet with the correct voltage.
5. Visually check that the work area is clear and clean.

## **10. Putting into use**

### **10.1 Startup**

1. Turn the power switch to ON.
2. Check that the emergency stop button is released (pulled out).
3. Turn the pump switch to ON.
4. Set the desired pressure with the air regulator.
5. Read the set pressure on the pressure gauge.
6. Close the cabinet.

### **10.2 Operation during use**

- Activate the machine with the foot pedal.
- Use the window cleaning switch to keep the viewing window clean during the process.
- Monitor the pressure gauge to ensure that the pressure remains within the permitted range.

## **11. Disable**

1. Release the foot pedal.
2. Turn the pump switch to OFF.
3. Turn the power switch to OFF.
4. Close the ball valves.
5. If necessary, disconnect the air supply and power cord.

## **12. Emergency procedure**

- In case of danger or malfunction, immediately press the emergency stop button.
- The device switches off immediately.
- Do not rectify the cause until the appliance has been completely disconnected from the power supply.



### 13. Maintenance and replacement of solvent

Maintenance Frequency	Component / Function	Maintenance Action	Remarks
Daily	Spray gun and hoses	Flush with clean water for 2–3 minutes	Prevents clogging
Daily	Inspection window	Check and clean via window cleaning function	Ensures good visibility
Daily	Work area	Remove coarse dirt	After each working day
Daily	Hoses & couplings	Visual inspection for leaks	Repair immediately in case of leakage
Weekly	Air hoses	Check for wear and kinks	Replace if damaged
Weekly	Foot pedal	Check operation	Must switch smoothly
Weekly	Emergency stop button	Test for correct operation	Mandatory for safety
Weekly	Pressure gauge	Check correct pressure indication	6–8 bar
Weekly	Grates / floor	Cleaning	Prevents buildup
Periodic	Nozzle	Check for wear	Replace if spray power is reduced
Periodic	Pump	Check noise and operation	Inspect if deviations occur
Periodic	Electrical cables	Check for damage	Only when de-energized
Periodic	Fasteners	Check and tighten	Vibrations may loosen them
When contaminated	Water & blasting media	Replace according to procedure	35–40 L water / 7–8 L grit
Extended downtime	Complete machine	Clean, empty, and disconnect	Store dry and frost-free

#### Solvent replacement

Rinse the sand in the cabinet with the gun into the solvent tank, place a movable container at the bottom of the machine, then open the G3/4 ball valve (27#) and allow the sand to drain along with the water. After the sand and water mixture has sat for 24 hours, the sand will settle to the bottom and should be properly disposed of after the water has drained.



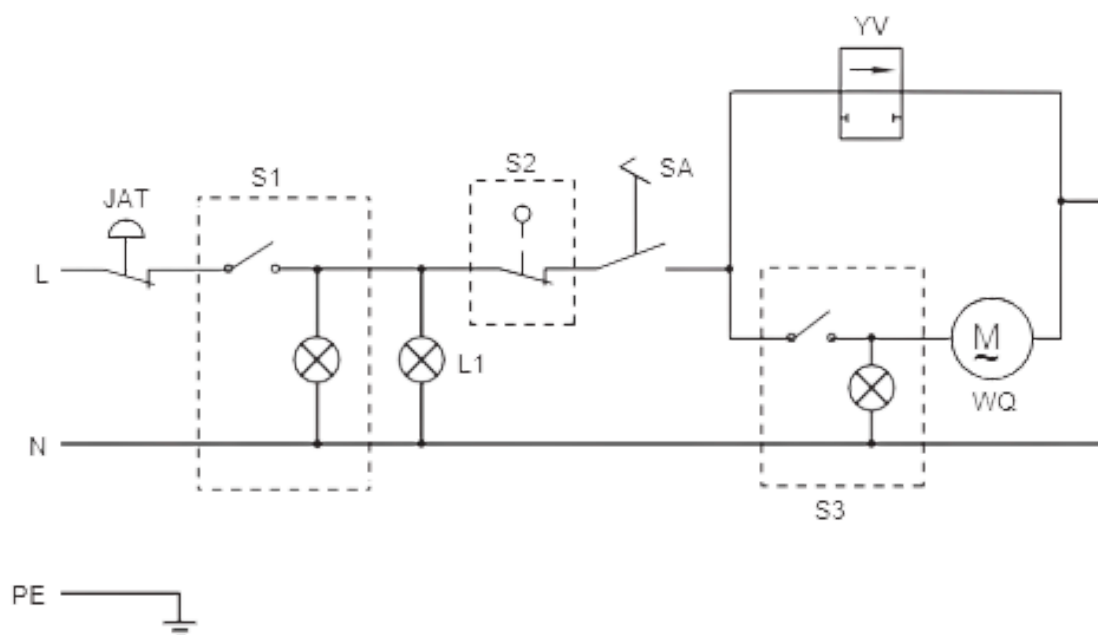
## 14. Problem solving

Problem:	Possible cause:	Solution:
<b>Light not working</b>	1. Poor contact in the circuit 2. Light is broken	1. Check and repair the circuit 2. Replace a new lamp
<b>Gun not working</b>	1. Check limit switch 2. Electromagnetic valve defective 3. Compressed air hose defective 4. Pump not working	1. Replace the limit switch 2. Replace a new solenoid valve 3. Check and clean the air hose 4. Check the pump circuit or replace the pump
<b>Compressed air does not produce pressure</b>	1. Compressed air hose defective 2. Air regulator defective	1. Check and clean the air hose 2. Check or replace the air regulator

## 15. Technical specifications

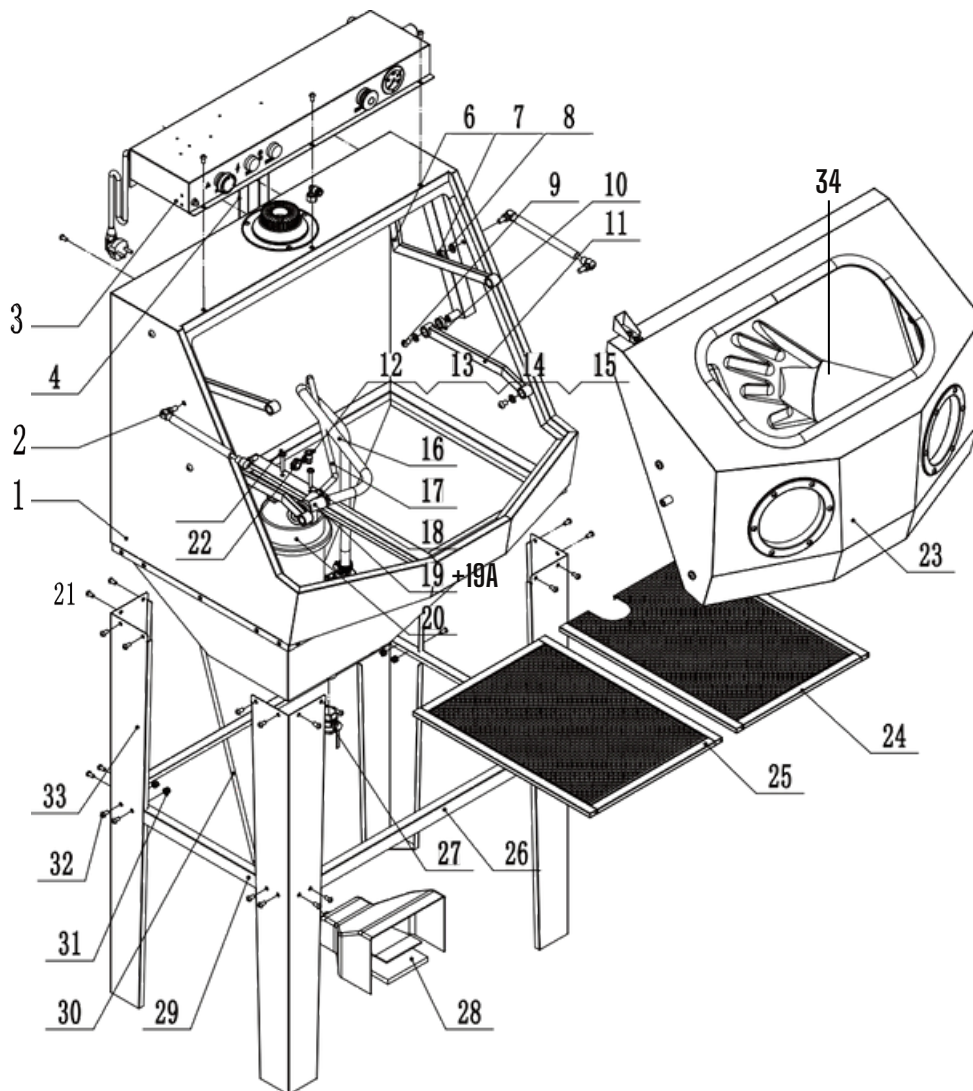
Description	Specification
Pomp	370 W/230 V/50 Hz
Pompdebiet	66 RPM
Media type	Water and sand (5:1)
Ronde LED-lamp	12
Capacity cabinet	200
Solvent capacity	35 ~ 40 l
Sprinkler	ø 7
Work pressure	6 - 8 bar
Working area	720 x 600 x 580 mm

## 16. Wiring diagram



Code	Description
L	Phase wire (Live)
N	Neutral wire
PE	Protective earth (Ground)
JAT	Emergency stop switch
S1	Switch
S2	Interlock switch
S3	Pump switch
SA	Foot switch
WQ	Submersible pump for wastewater
YV	Solenoid valve
L1	Lamp

## 17. Parts



### NR.Description Quantity

1. Caste assemblage	1
2. Air spring	2
3. Lamp Assy	1
4. Cable protector	1
5. M5*10 screw	3
6. Rear bar	2
7. M8 nut	2
8. M8 Flat washer	10
9. M8*10 screw	8
10. Nylon casing	2
11. Front bar	2
12. G1/4 flat washer	1
13. L Quick coupling PL-02	1
14. G1/4 L-connector	1
15. L Quick coupling PPH10-002	1
16. Water and sand hose	1
17. Air hose	1

### NR.Description Quantity

18. Clamp	2
19. Ray gun, complete	1
19A. Nozzle	1
20. Water and sand pump	1
21. M6*30 screw	2
21. M16- connector	1
21. Front door complete	1
21. Raster A	1
21. Raster B	1
21. Long reinforcement rod	2
21. G3/4 L ball cock	1
21. Foot pedal	1
21. Short reinforcement rod	2
21. Cable	1
21. M6 nut	16
21. M6*16 screw	38
21. Support foot	4
21. Gloves	2

## 18. Parts list

1.	PAB19A-01	Throw assembly
2.	PAB19A-02	Air spring
3.	PAB19A-03	Lamp Assy
4.	PAB19A-04	Cable protector
5.	PAB19A-05	M5*10 screw
6.	PAB19A-06	Rear rod
7.	PAB19A-07	M8-nut
8.	PAB19A-08	M8 Flat washer
9.	PAB19A-09	M8*10 screw
10.	PAB19A-10	Nylon casing
11.	PAB19A-11	Front rod
12.	PAB19A-12	G1/4 platte sluitring
13.	PAB19A-13	L Quick Coupling PL-02
14.	PAB19A-14	G1/4 L-connector
15.	PAB19A-15	L Quick Coupling PPH10-002
16.	PAB19A-16	Water and sand hose
17.	PAB19A-17	Air hose
18.	PAB19A-18	Clamp
19.	PAB19A-19	Blasting pistol, complete
19A.	PAB19A-19A	Nozzle
20.	PAB19A-20	Water and sand pump
21.	PAB19A-21	M6*30 screw
22.	PAB19A-22	M16- connector
23.	PAB19A-23	Front door complete
24.	PAB19A-24	Raster A
25.	PAB19A-25	Raster B
26.	PAB19A-26	Long reinforcement rod
27.	PAB19A-27	G3/4 L ball valve
28.	PAB19A-28	Foot pedal
29.	PAB19A-29	Short reinforcement bar
30.	PAB19A-30	Cable
31.	PAB19A-31	M6 nut
32.	PAB19A-32	M6*16 screw
33.	PAB19A-33	Support foot
34.	PAB19A-34	Gloves

## 19. Warranty

### Warranty Terms and Conditions

1. This warranty shall enter into force on the date stated on the original purchase invoice and shall remain valid for a period of twelve (12) months.
2. This warranty is non-transferable unless prior written consent has been obtained from the supplier.
3. Warranty claims will not be accepted without presentation of the original purchase invoice.
4. This warranty shall apply exclusively provided that the product has been used in full compliance with the instructions contained in the user manual and solely for its intended purpose.
5. No alterations, modifications, or technical changes may be made to the product.
6. This warranty shall be void in the event of improper, negligent, or incorrect use of the product.
7. Transportation, shipping, and related costs are expressly excluded from this warranty.
8. Any repair work must be carried out exclusively by the supplier or an authorised service partner. Repairs performed by unauthorised third parties shall immediately void all warranty rights.
9. Repairs performed during the warranty period shall not result in an extension of the original warranty period. However, a separate warranty period of three (3) months shall apply to the repaired components, provided that the original warranty period has expired.
10. All maintenance and servicing operations described in the user manual must be performed in a timely and proper manner. Failure to do so may result in the warranty becoming void.
11. Warranty claims may only be submitted to the original point of sale at which the product was purchased.

## 20. Declaration of conformity

### ***EG-verklaring van overeenstemming - Declaration of conformity – Konformitätsverklärung - Declaration de conformite - Dichiarazione di conformita- Declaracion de conformidad***

Wij, Valkenpower BV, Haverkamp 11, 6051 AC Maasbracht, Nederland, verklaren geheel onder eigen verantwoordelijkheid dat de producten

We, Valkenpower BV, Haverkamp 11, 6051 AC Maasbracht, Nederland, declare under our sole responsibility that the receiver

Wir, Valkenpower BV, Haverkamp 11, 6051 AC Maasbracht, Nederland, erklären in alleiniger Verantwortung, daß der Behälter

Nous, Valkenpower BV, Haverkamp 11, 6051 AC Maasbracht, Nederland, déclarons sous notre seule responsabilité que le réservoir

Noi, Valkenpower BV, Haverkamp 11, 6051 AC Maasbracht, Nederland, dichiariamo sotto la nostra responsabilità che

La empresa, Valkenpower BV, Haverkamp 11, 6051 AC Maasbracht, Nederland, declara, bajo su responsabilidad, que

Type	Beschrijving	Merk
Model	Description	Brand
Art	Beschreibung	Marke
Tipe	Description	Marque
Tipo	Descrizione	Marca
Modelo	Descripción	Marca
<b>AB19A</b>	<b>Roestvrijstalen natstraalkast</b>	<b>Airpro</b>
<b>AB19A</b>	<b>Stainless steel wet blasting cabine</b>	<b>Airpro</b>
<b>AB19A</b>	<b>Edelstahl-Nassstrahlkabine</b>	<b>Airpro</b>
<b>AB19A</b>	<b>Cabine de sablage humide en acier inoxydable</b>	<b>Airpro</b>

Waarop deze verklaring betrekking heeft, in overeenstemming zijn met de volgende normen:

To which this declaration relates is in conformity with the following document: Auf dem sich diese Erklärung bezieht, mit dem folgendem Dokument übereinstimmt: Auquel se réfère cette déclaration est conforme à le document suivant: A cui si riferisce dichiarazione, corrisponde ai seguenti documenti: Attestazione CE di tipo A1 al que se refiere la presente declaración, corresponde a los siguientes documentos:

**De machinerichtlijn: 2006/42/EG 2014/30/EU 2014/30/EU**

**Following the provisions of Directive: 2006/42/EG 2014/30/EU 2014/30/EU**

**Gemäß den Bestimmungen der Richtlinie: 2006/42/EG 2014/30/EU 2014/30/EU**

**Conformément aux dispositions de la Directive: 2006/42/EG 2014/30/EU 2014/30/EU**

**Conformemente alla direttiva: 2006/42/EG 2014/30/EU 2014/30/EU**

**Conforme con la norma: 2006/42/EG 2014/30/EU 2014/30/EU**

**Directeur Valkenpower**

Serienummer:

Serial number:

*Nederland, Maasbracht, 12-01-2026*

*B.A.H Valkenburg*