



User manual

Central dust extraction

type WVC01



Read this manual carefully before using the dust extractor.

Table of contents	Page
1. Keeping the user manual	3
2. Safety instructions	4
3. Product overview	5
4. Parts list	6
5. Circuit diagram	7
6. Mounting brackets	8
7. Replacing the engine	9
7.1 Engine disassembly	9
7.2 Montage motor	9
8. Replacing and cleaning the filter element	10
8.1 Filter element cleaning method	10
9. Cleaning the dust bin	10
10. Problem solving	11
11. Warranty	12
12. EC Declaration	13

1. Keep the user manual

Keep this user manual in a safe place. The information in this document may be necessary for installation, operation, maintenance, or troubleshooting. Keep this manual accessible at all times for future reference. This user manual contains important safety instructions and legal information. Keep this document for the entire life of the product. Always provide this manual if the product is resold, transferred, or relocated. It is mandatory to keep this user manual in a centrally accessible location. Personnel who work with this product must have access to the most recent version of this documentation at all times.



Dispose of electrical appliances in an environmentally friendly manner. Do not dispose of electrical appliances with household waste. In accordance with European Directive 2012/19/EU on electronic appliances, they must be collected separately for recycling. Contact your local authorities for available disposal options for your worn-out appliance.

© 2026 Airpro All rights reserved. No part of this publication may be reproduced, stored in a retrieval system, or transmitted in any form or by any means without the express prior written permission of the publisher, except in cases where otherwise permitted by law.

2. Safety instructions

General safety

- Read this manual completely before use.
- Use the appliance only for indoor and dry dust extraction.
- Do not use the appliance without a properly fitted filter.
- Always unplug the appliance before servicing.
- Place the appliance in a well-ventilated area.

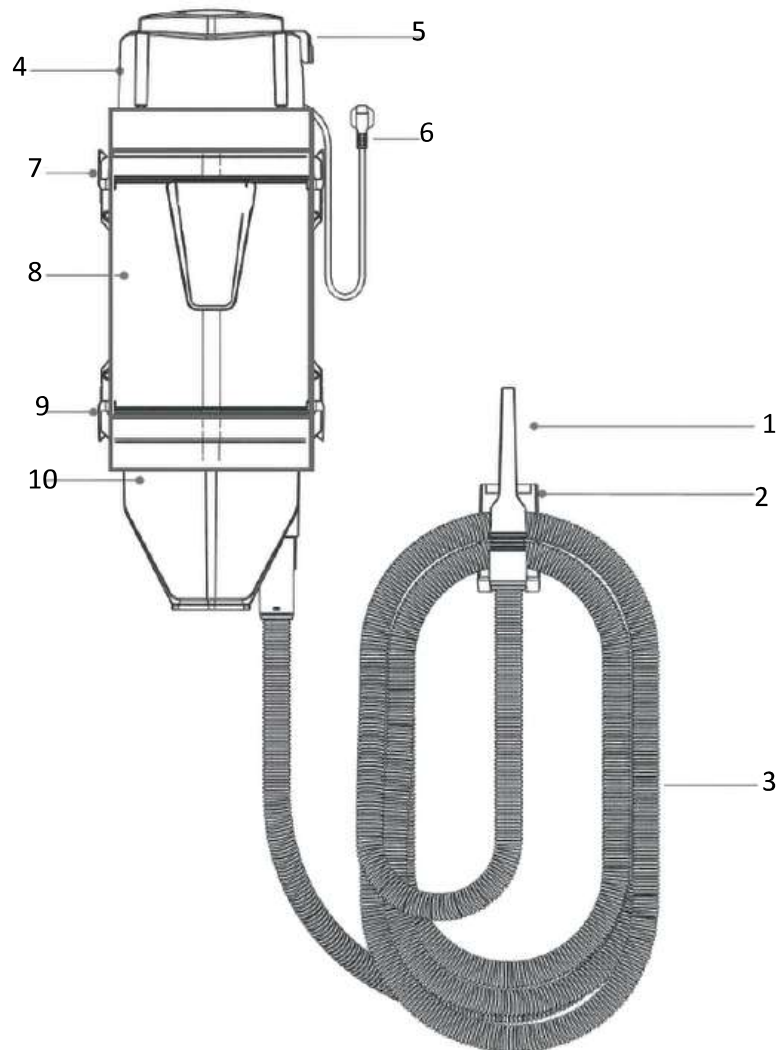
Electrical safety

- Check the cable for damage before use.
- Do not use a damaged switch or wiring.
- Avoid contact with water near electrical parts.

Prevent engine damage

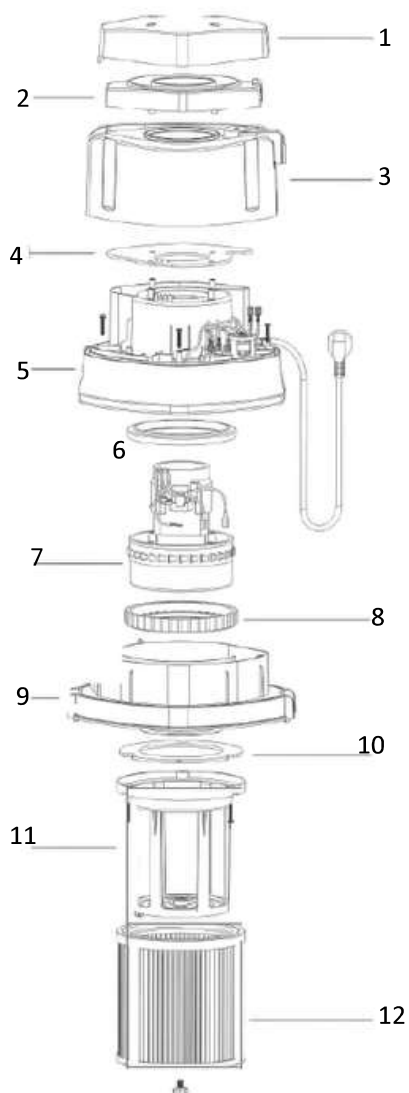
- Clean or replace the filter regularly.
- Check the hose for blockages.
- Do not use the appliance with reduced suction power without supervision.

3. Product overview



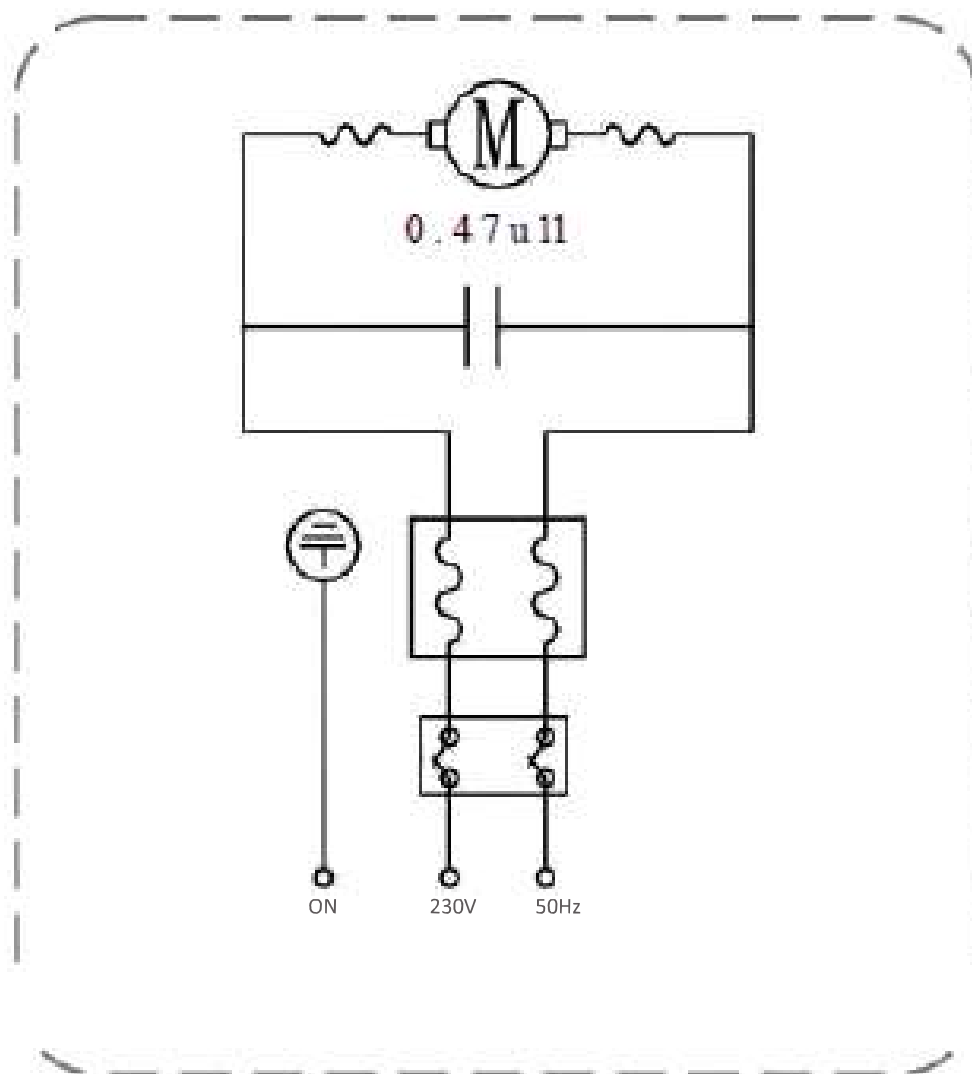
1. Mouthpiece
2. Hose holder
3. Hose (8 meters)
4. Head
5. Control switch (ON/OFF)
6. Power cord
7. Buckle
8. Filterelement
9. Buckle
10. Dust collection bin

4. Parts list



- | | | |
|----|-----------|-----------------------------------|
| 1 | PWVC01-01 | Cold air hood - 1 |
| 2 | PWVC01-02 | Cold air hood - 2 |
| 3 | PWVC01-03 | Top cover |
| 4 | PWVC01-04 | Sealing gasket |
| 5 | PWVC01-05 | Extractor hood Damping rubber |
| 6 | PWVC01-06 | for engine (top) |
| 7 | PWVC01-07 | 1200W motor |
| 8 | PWVC01-08 | Sealing rubber for motor (bottom) |
| 9 | PWVC01-09 | Mounting cover for motor |
| 10 | PWVC01-10 | Seal for filter element holder |
| 11 | PWVC01-11 | Filter element holder |
| 12 | PWVC01-12 | Filter |

5. Circuit diagram



6. Mounting mounting brackets

1. Determine height:

Measure 1280mm from the floor and mark the top of the bracket.

2. Align the bracket:

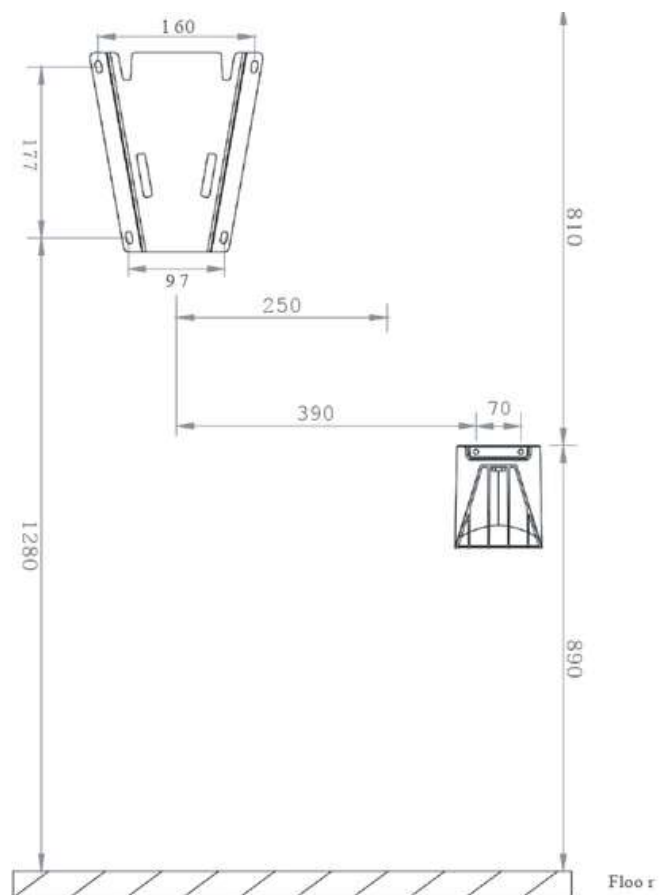
Place the wall bracket level and mark the drill holes.

3. Confirm:

Drill holes, insert wall plugs and screw the bracket firmly.

4. Hanging the unit:

Hang the unit in the bracket and check that it is sturdy and straight.



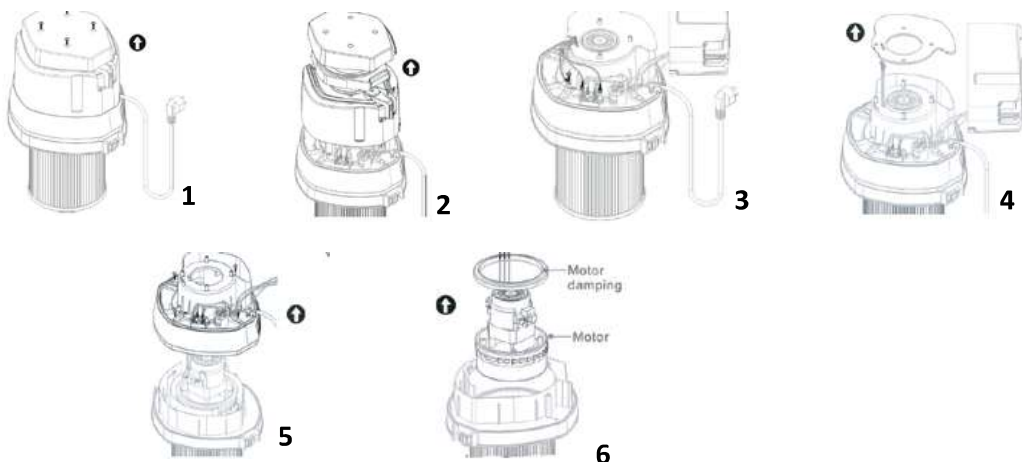
⚠ Important

- Only mount indoors on a load-bearing wall.
- Check that the bracket is fully secured before use.
- Keep ventilation openings clear.

7. Replacing the engine

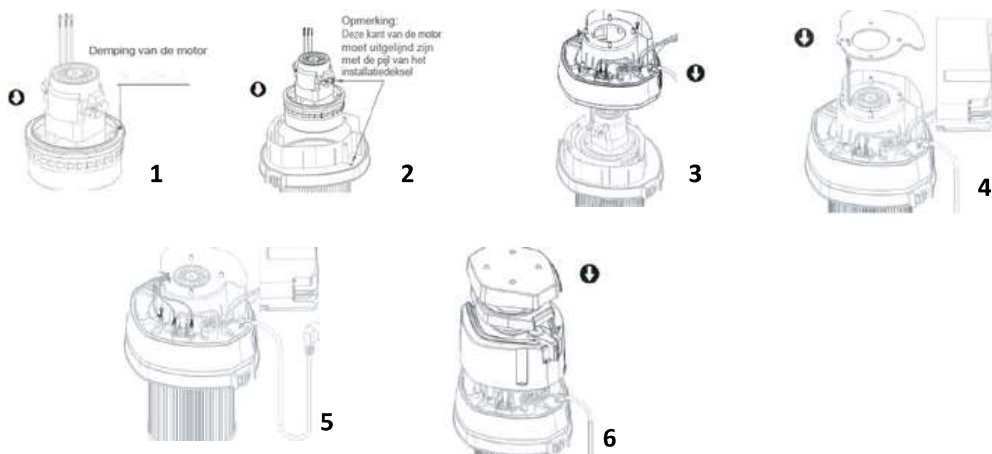
7.1 Engine disassembly

1. Remove 4 screws from the cold air cap.
2. Remove the cold air cap and cover.
3. Remove 3 wires connected to the motor.
4. Remove the sealing ring.
5. Remove the exhaust cover.
6. Remove the engine vibration damper and the engine.



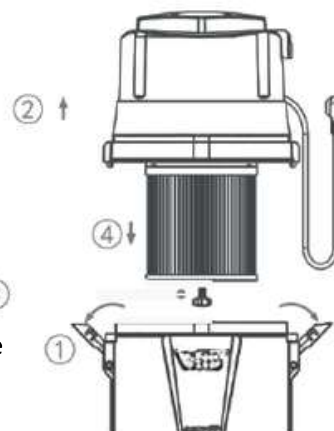
7.2 Montage motor

1. Place the damping rubber on the new motor.
2. Place the motor in the motor mounting hole. (See the instructions.)
3. Install the exhaust cover and secure it with screws.
4. Install the sealing ring.
5. Connect the three motor wires to the appropriate terminals.
6. Install the top cover and the cold air cover.



8. Replace and clean filter element

1. Open the buckle on the vacuum barrel upward.
2. Remove the head of the vacuum extractor.
3. Loosen the screw at the bottom of the filter element.
4. Remove the filter element by pulling it downwards.



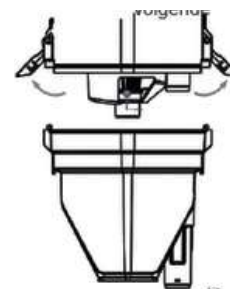
8.1 Filter element cleaning method

1. Use clean compressed air to blow from the inside out.
2. Clean the filter with water and ensure it is thoroughly dried before replacing it. (Do not wash more than 5 times.)
3. It is recommended to clean the filter once a week.
4. Install a new filter element every two months.



9. Clean the dust container.

1. Remove the dust bin and at the same time open the buckle under the dust bin outwards.
2. Remove the dust container.
3. Discard the waste from the dust bin.
4. Clean the dust container with water and dry it thoroughly before replacing it.








NB :

Keep the spine clean to prevent blockage in the air passage so that waste and dust can be properly removed.



10. Problem solving

Troubleshooting		
Problem Description	Problem Analysis	Solution
 Reduced suction power	Damaged sealing gasket	Replace the gasket
	Clogged filter element	Clean or replace the filter
	Clogged hose	Clean or replace the hose
 Motor noise suddenly increases	The filter element is damaged and debris is sucked into the motor	Clean the motor; if the Filterelement beschädigt, check / replace the filter element
	If motor noise is still loud after cleaning the motor The first involved in the interruptor review	The motor's fan is worn out, replace the motor
 The vacuum cleaner does not work Turn on the switch, the motor does not run and the motor overheats	Turn on the switch, the motor does not run and the motor overheats	See above, check if the sealing gasket is damaged (and replace), replace the sponge and motor if smells of plastic
	The input cable of the switch is live, but the output cable is not live	Replace the switch
	The input cable, vom the schalter steht unter Spannung, ron filter ist eint tstege Spannung	
 The vacuum cleaner does not work 	Turn on the switch, the motor does not run and the motor overheats	Replace the switch
	The input cable of the switch is live, but the output cable is not live	Replace the switch
 The vacuum cleaner does not work Funken im Staubsauger	Debris enters the motor or the carbon brushes wear out, causing the motor to overheat and burn out	Replace the motor (it is recommended to replace the carbon brushes each year)

11. Warrenty

Warranty Terms and Conditions

1. This warranty shall enter into force on the date stated on the original purchase invoice and shall remain valid for a period of twelve (12) months.
2. This warranty is non-transferable unless prior written consent has been obtained from the supplier.
3. Warranty claims will not be accepted without presentation of the original purchase invoice.
4. This warranty shall apply exclusively provided that the product has been used in full compliance with the instructions contained in the user manual and solely for its intended purpose.
5. No alterations, modifications, or technical changes may be made to the product.
6. This warranty shall be void in the event of improper, negligent, or incorrect use of the product.
7. Transportation, shipping, and related costs are expressly excluded from this warranty.
8. Any repair work must be carried out exclusively by the supplier or an authorised service partner. Repairs performed by unauthorised third parties shall immediately void all warranty rights.
9. Repairs performed during the warranty period shall not result in an extension of the original warranty period. However, a separate warranty period of three (3) months shall apply to the repaired components, provided that the original warranty period has expired.
10. All maintenance and servicing operations described in the user manual must be performed in a timely and proper manner. Failure to do so may result in the warranty becoming void.
11. Warranty claims may only be submitted to the original point of sale at which the product was purchased.

12. EG-Verklaring

***EG-verklaring van overeenstemming - Declaration of conformity –
Konformitätsverklärung - Declaration de conformite - Dichiarazione di
conformita- Declaracion de conformidad***

Wij, We,Wir,Nous,**Valkenpower BV, Haverkamp 11, 6051 AC Maasbracht, Nederland**, verklaren geheel onder eigen verantwoordelijkheid dat het hieronder beschreven product in overeenstemming is met de volgende EU-richtlijnen, Declare entirely under our own responsibility that the product described below is in conformity with the following EU Directives, Erklären in alleiniger Verantwortung, dass das nachfolgend beschriebene Produkt den folgenden EU-Richtlinien entspricht, dDéclarons sous notre entière responsabilité que le produit décrit ci-dessous est conforme aux directives européennes suivantes.

Type Model Art Type	Beschrijving Description Beschreibung Description	Merk Brand Marke Marque
WVC01	Centrale stofafzuiging	Airpro
WVC01	Central vacuum system	Airpro
WVC01	Zentralstaubsauganlage	Airpro
WVC01	Système d'aspiration centralisée	Airpro

Waarop deze verklaring betrekking heeft, in overeenstemming zijn met de volgende normen:To which this declaration relates, is in conformity with the following standards :Auf die sich diese Erklärung bezieht, entspricht den folgenden Normen entsprechen:À laquelle la présente déclaration se rapporte, sont conformes aux normes suivantes

De machinerichtlijn: Following the provisions of Directive: Gemäß den Bestimmungen der Richtlinie:
Conformément aux dispositions de la Directive:
2014/35/EU; 2014/30/EU

Normen;Standards;Normen;Normes:

EN 60335-1:2012 + AC:2014 + A11:2014 + A13:2017 + A1:2019 + A14:2019 + A2:2019 + A15:2021

EN 60335-2-2:2010 + A11:2012 + A1:2013

EN 62233:2008 + AC:2008

EN IEC 55014-1:2021

EN IEC 55014-2:2021

EN IEC 61000-3-2:2019 + A1:2021 + A2:2024

EN 61000-3-3:2013 + A2:2021

Directeur Valkenpower

B.A.H Valkenburg

Nederland, Maasbracht, 04-02-2026